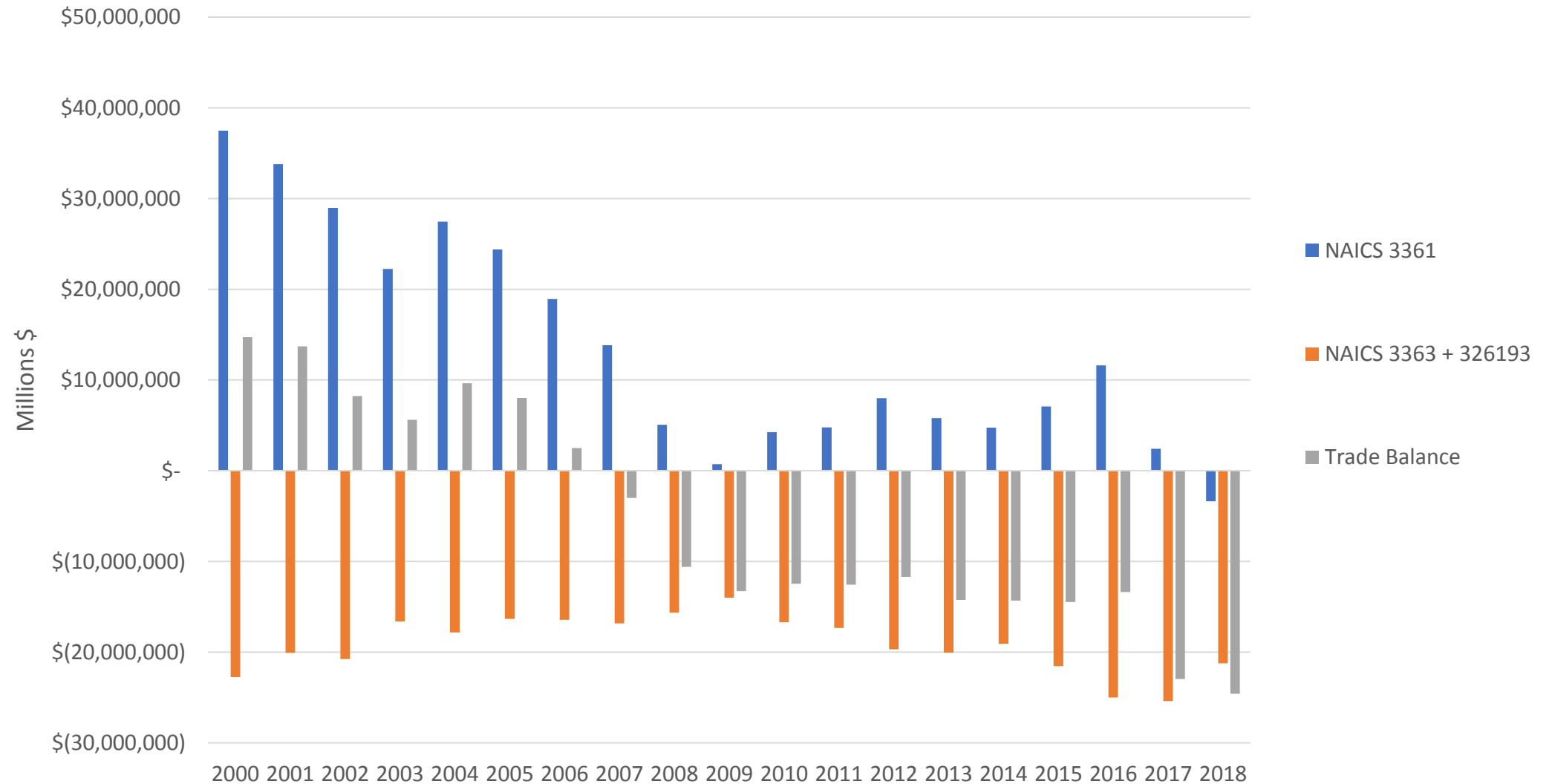


Regional Automotive Labour Market - Winnipeg

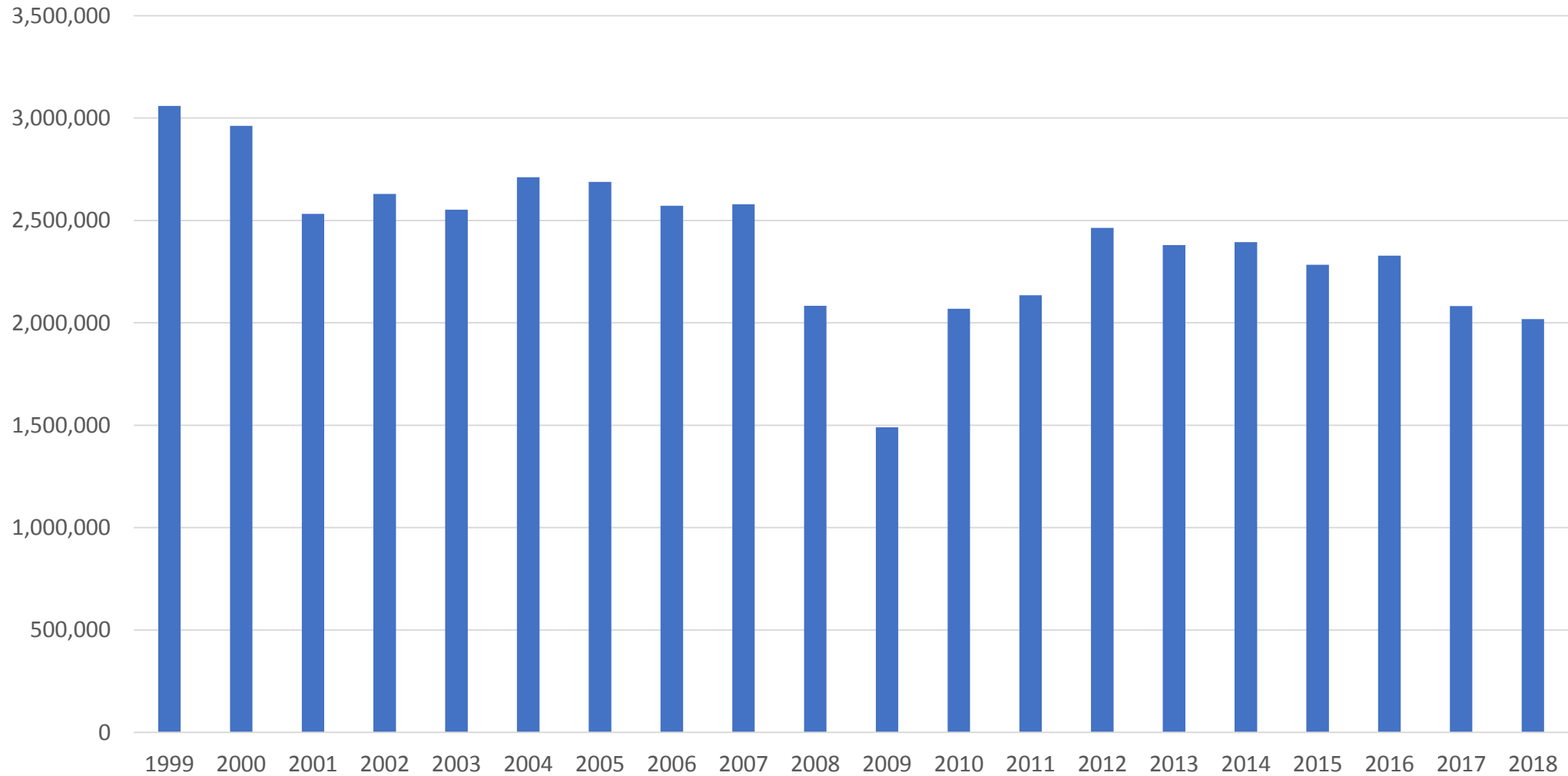
Summary Profile

April 2019

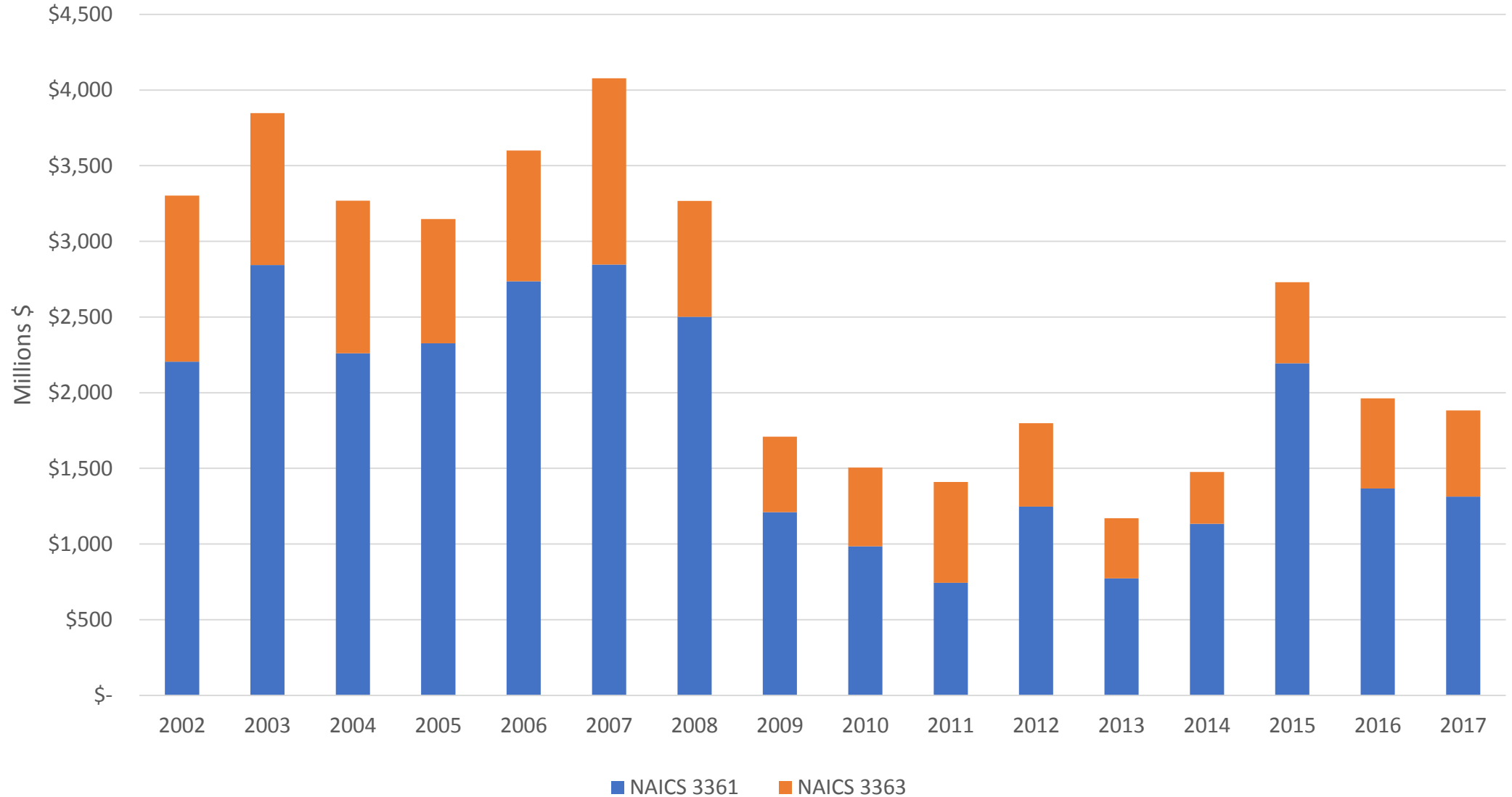
Canada's Automotive Trade Balance, 2000-2018



Vehicle Production (Units)



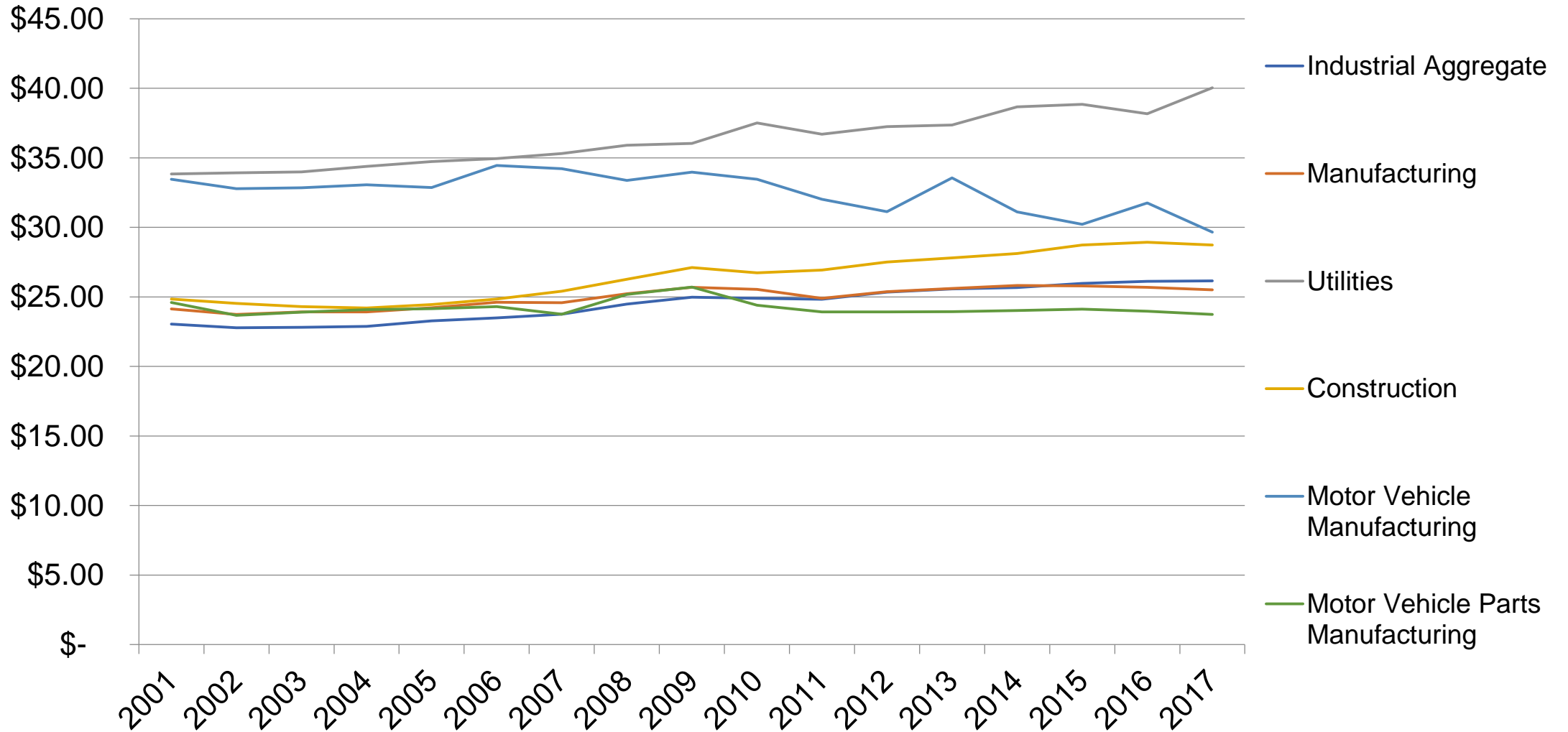
Capital Expenditures



Jobs Per Sub Sector

Category	Establishments	Employment
Vehicle Assembly	19	>38,000
OEM Parts	9	>5,000
Independent Automotive Parts	>450	>95,000
'Diversified' Suppliers	>350	>25,000
Tooling and Automation	>250	>20,000
Software and Technology	>100	>5,000
Tire Manufacturing	7	>5,300
Raw Materials	>20	>15,000

Hourly Wages in Select Industries, 2001-2017



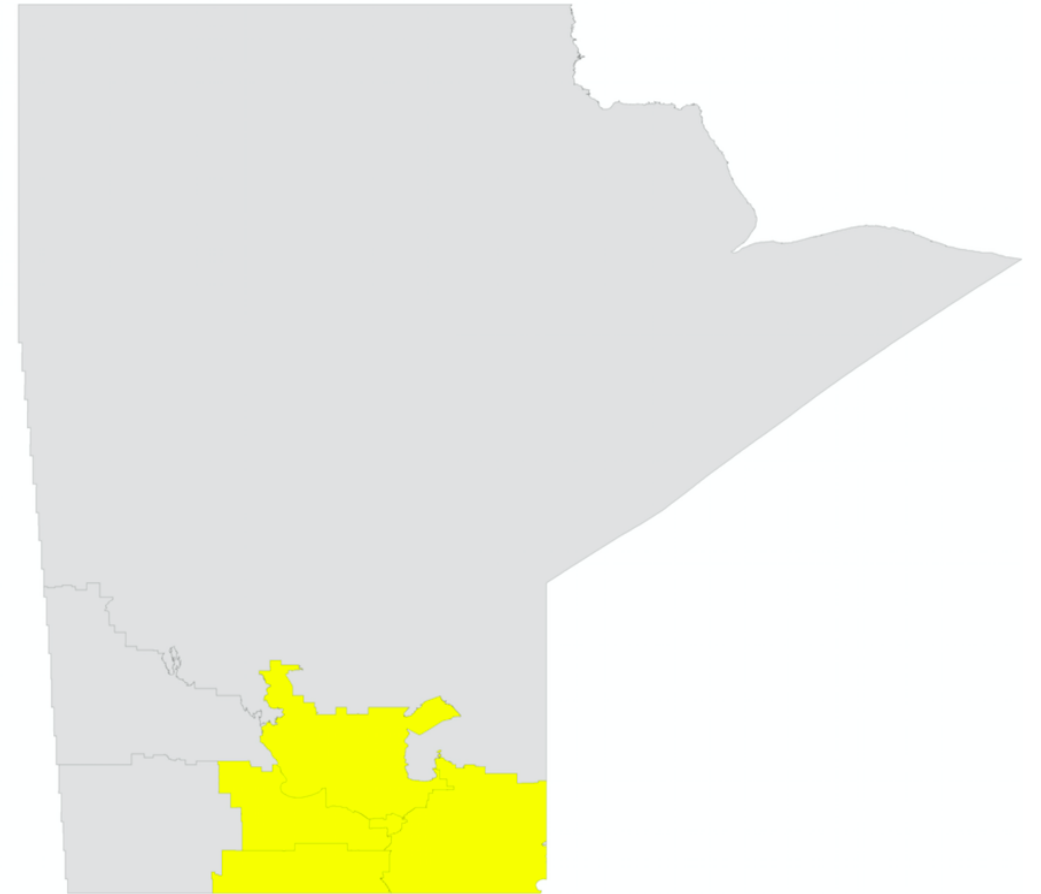
2017 Hourly Wages

Industry	2017 Hourly Wages
Utilities	\$40.03
Motor Vehicle Manufacturing	\$29.65
Construction	\$28.73
Industrial Aggregate	\$26.16
Manufacturing	\$25.35
Motor Vehicle Parts Manufacturing	\$23.74

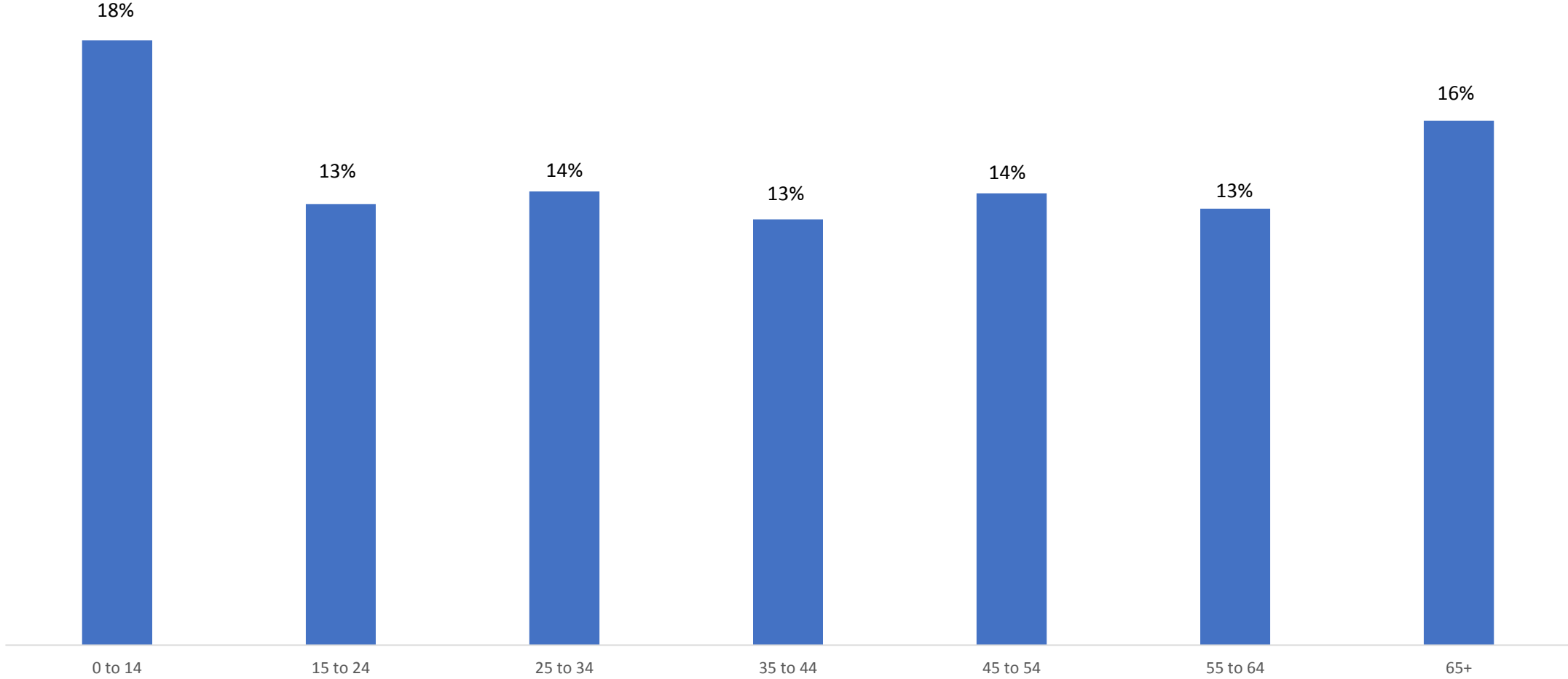
Winnipeg Economic Region

- **Total Population: 1,033,436**
- **Working Age Population: 683,785**
- **Labour Force*: 548,570**
- **Unemployment Rate: 7%**

*the labour force includes all individuals who are employers or are unemployed and actively seeking work

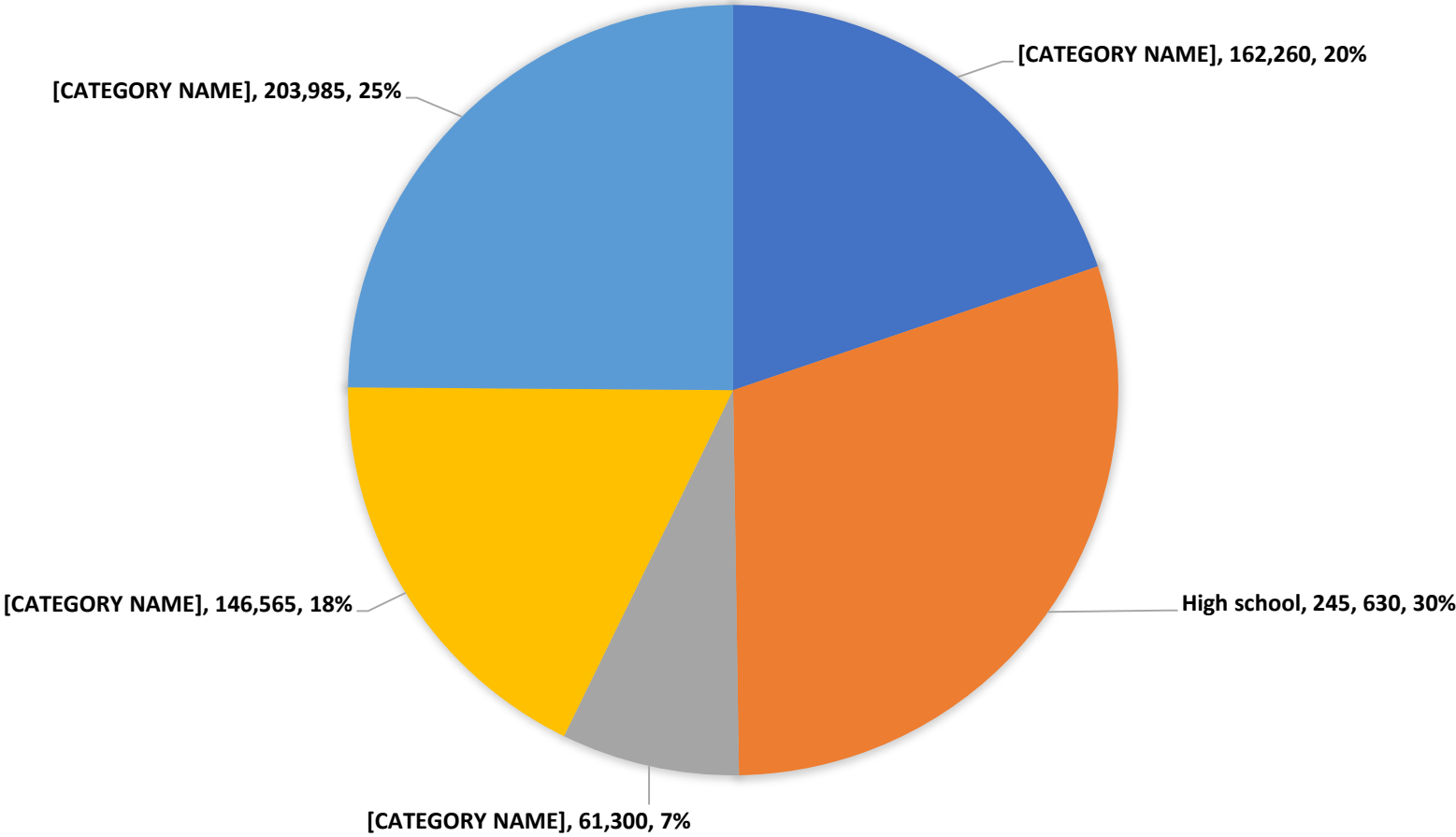


Total Population by Age Group, Winnipeg



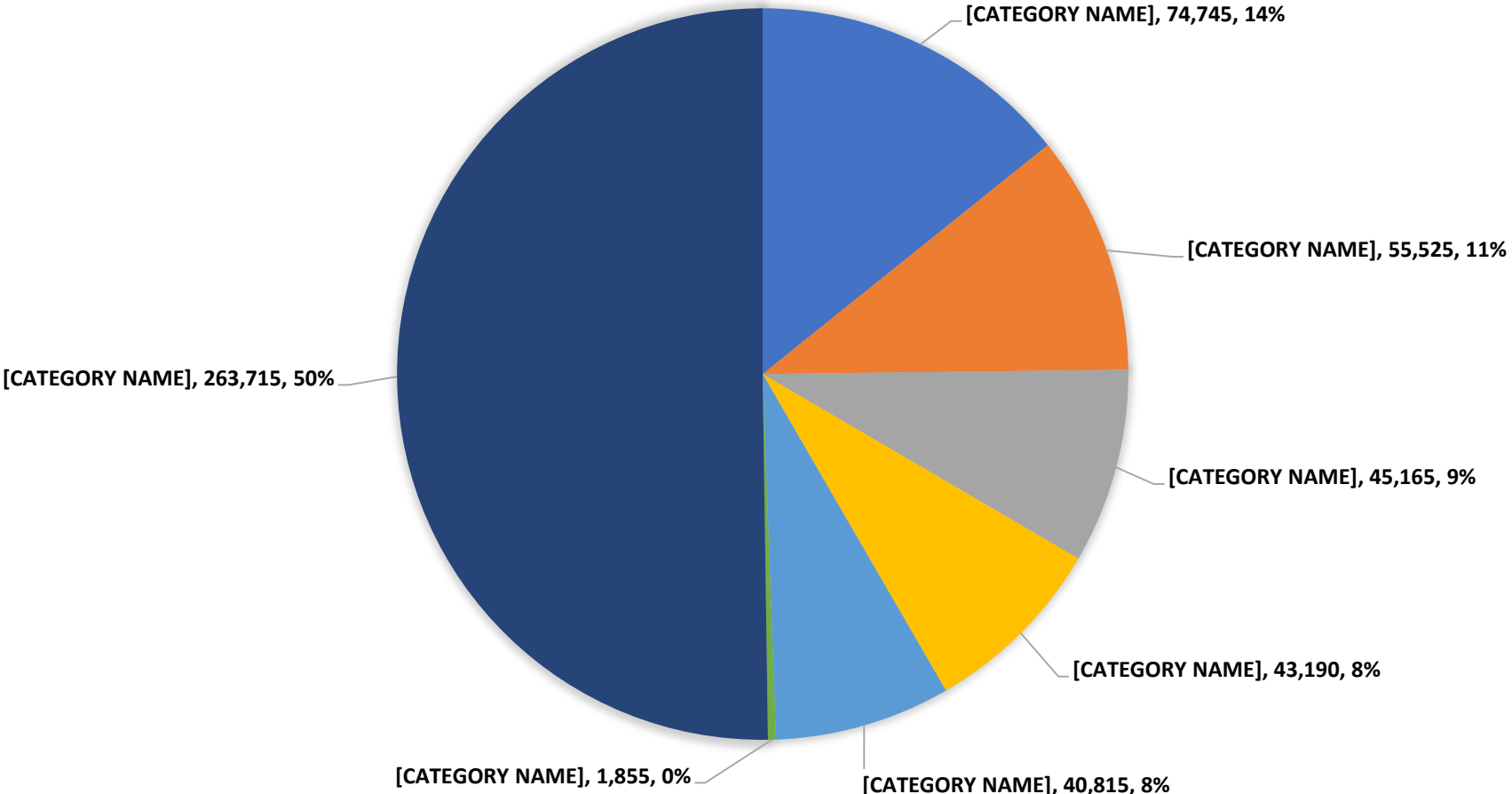
Source: Statistics Canada, 2016 Census

Working Age Population by Education, Winnipeg



Source: Statistics Canada, 2016 Census

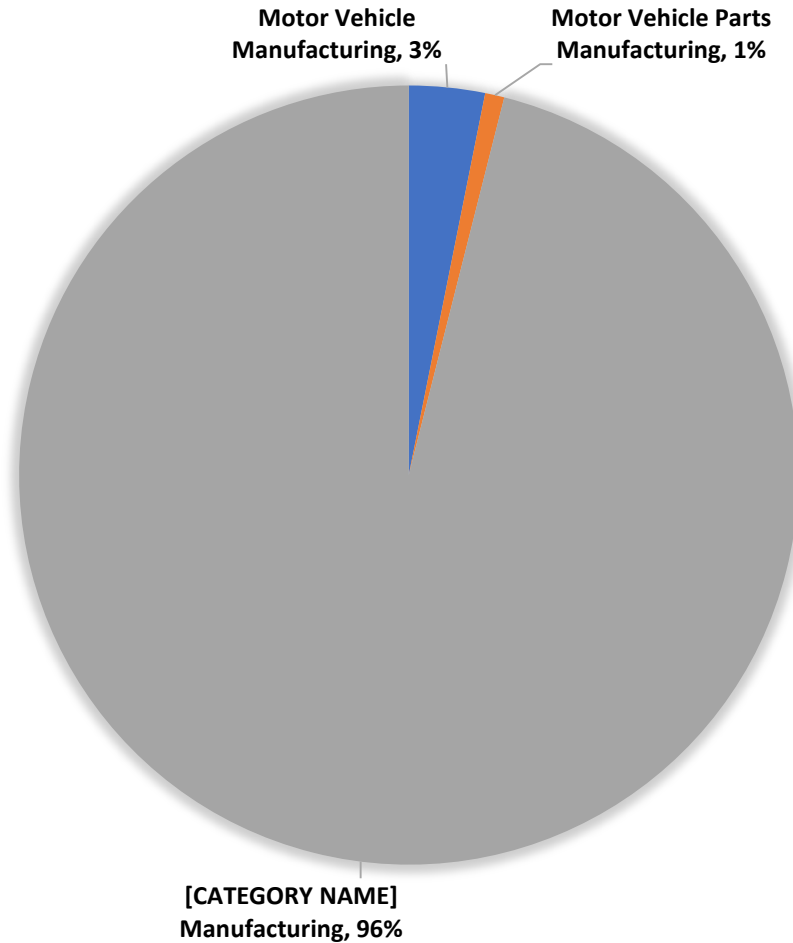
Total Labour Force by Industry, Winnipeg



Source: Statistics Canada, 2016 Census

Total Manufacturing, Winnipeg

- **Total Manufacturing:**
47,020; 9% of labour force
- **Motor Vehicle Manufacturing (3361):**
1,480
- **Motor Vehicle Parts Manufacturing (3363):**
375
- **Other Manufacturing:**
45,165



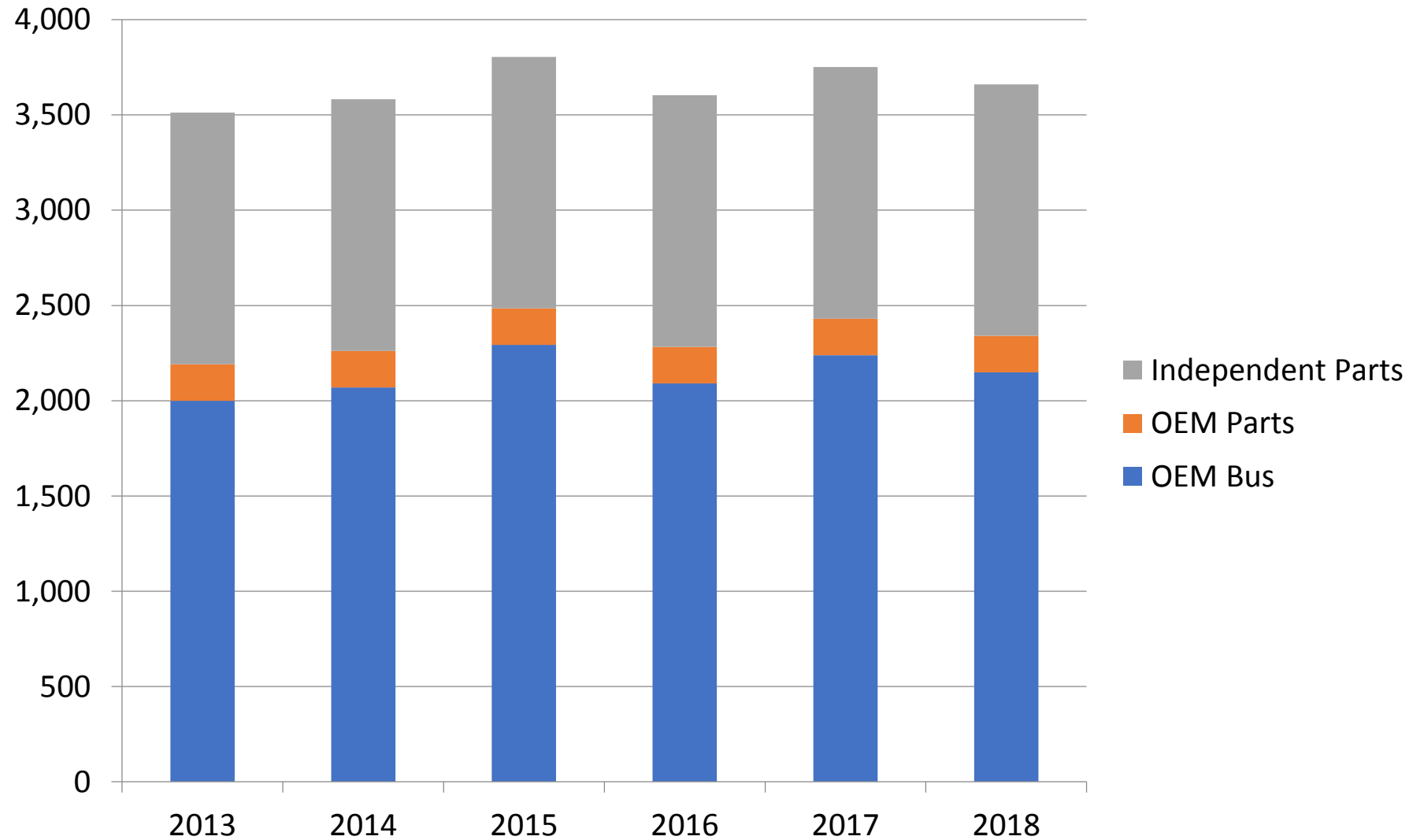
Key Automotive Manufacturing Occupations, Winnipeg

1. **Motor vehicle assemblers, inspectors and testers (NOC 9522)** – 80 workers; 4% of automotive manufacturing labour force
2. **Material handlers (NOC 7452)** – 40 workers; 2% of labour force
3. **Key trades*** - 40 workers; 2% of labour force
4. **Supervisors, motor vehicle assembling (NOC 9221)** – 45 workers; 2% of labour force
5. **Mechanical engineers (NOC 2132)** – 75 workers; 4% of labour force
6. **Manufacturing managers (NOC 0911)** – 80 workers; 4% of labour force

Overview - Winnipeg

- Over 3,600 jobs at nearly two dozen establishments + New Flyer's (NFI) HQ and R&D
- Bus production, electronic components for buses and trucks, and composite materials for buses
- Recent investments by NFI have secured Winnipeg as a centre for bus production and R&D

Motor Vehicle Employment, Winnipeg



Top Automotive Employers, Winnipeg

	Establishments	Employment
New Flyer Industries (NFI)	1	1110
MCI (NFI)	1	1039
Parker Vansco	1	508
Acrylon Plastics	3	240
Carfair Composites (NFI)	1	192