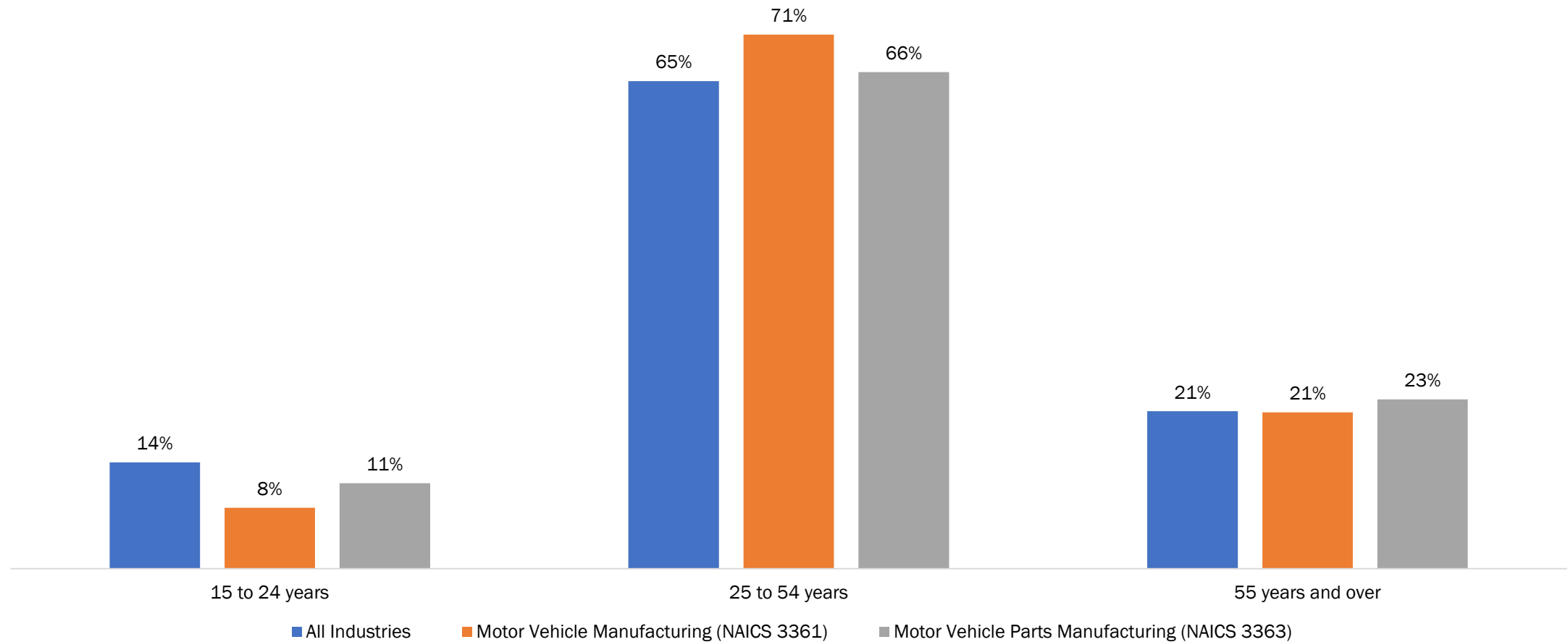


Regional Automotive Labour Market – Windsor-Sarnia

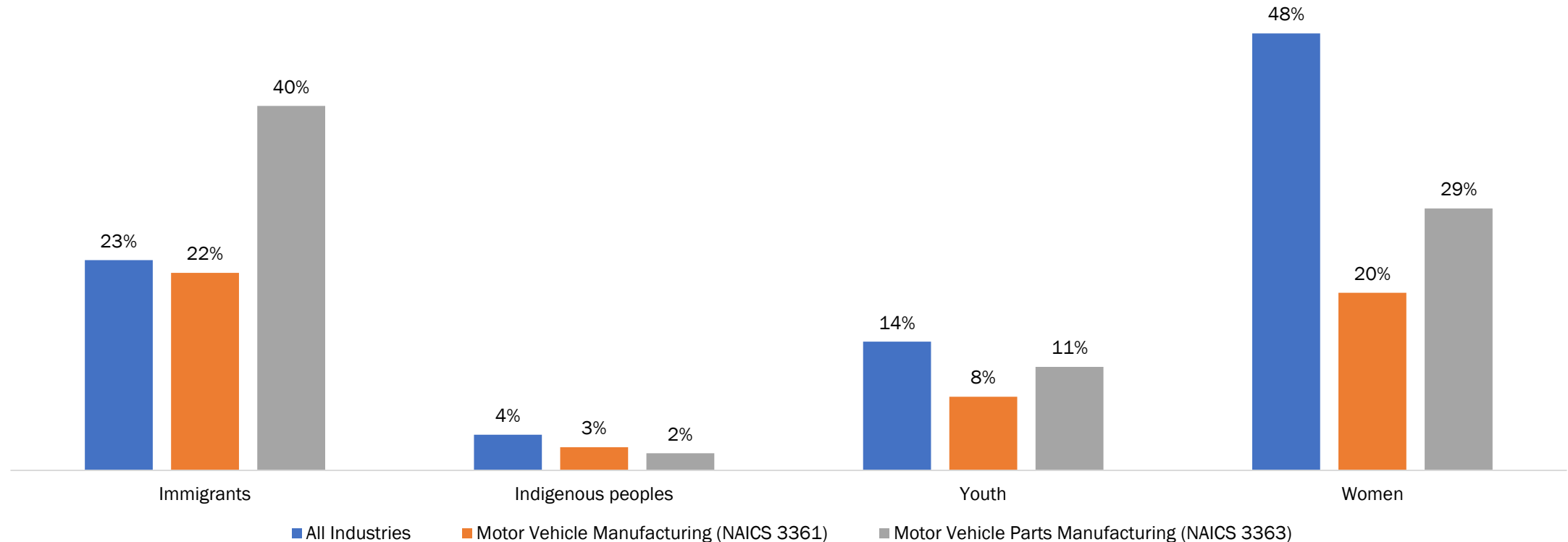
Summary Profile

April 2019

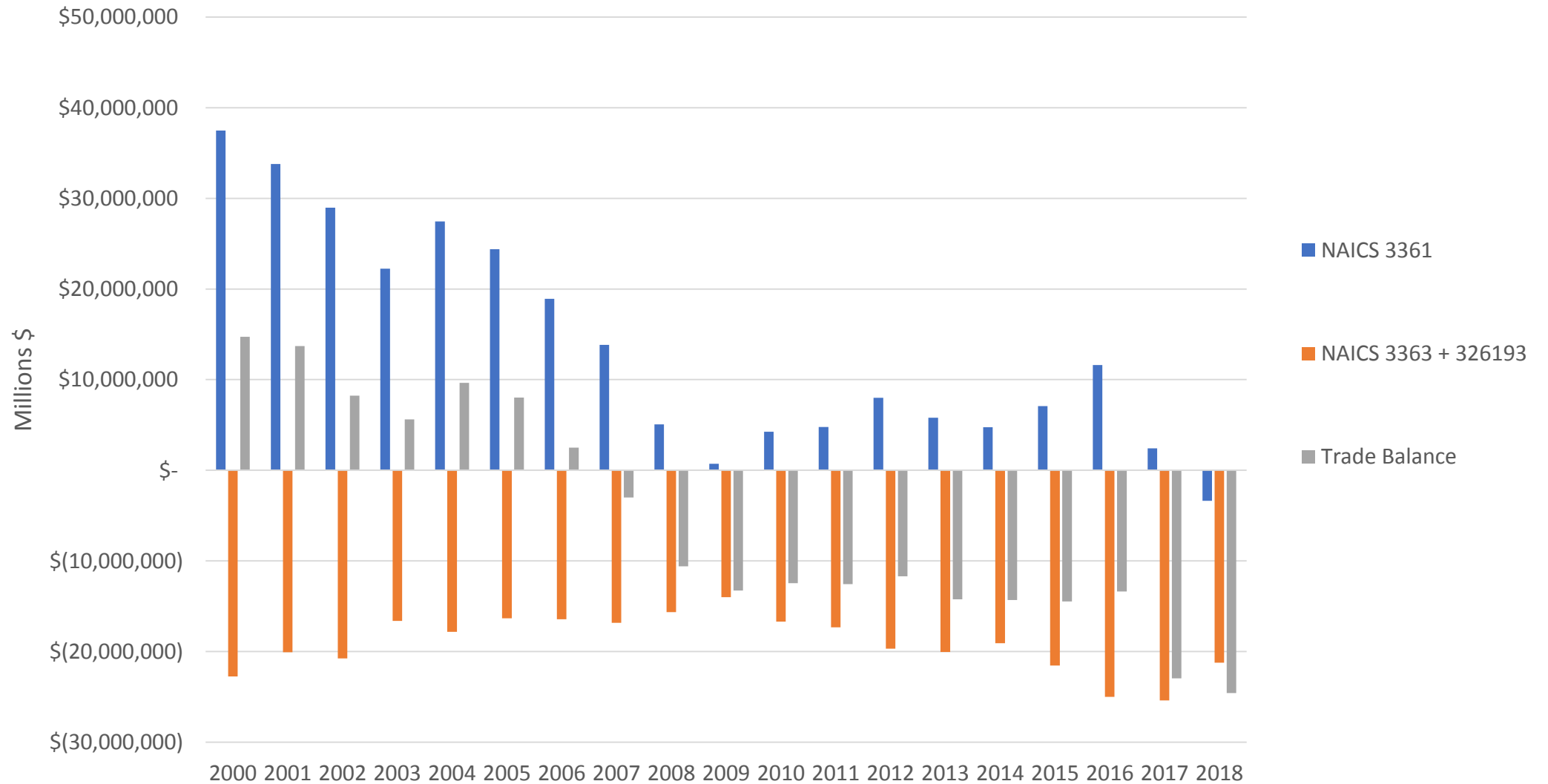
Total Labour Force by Age Group, Canada



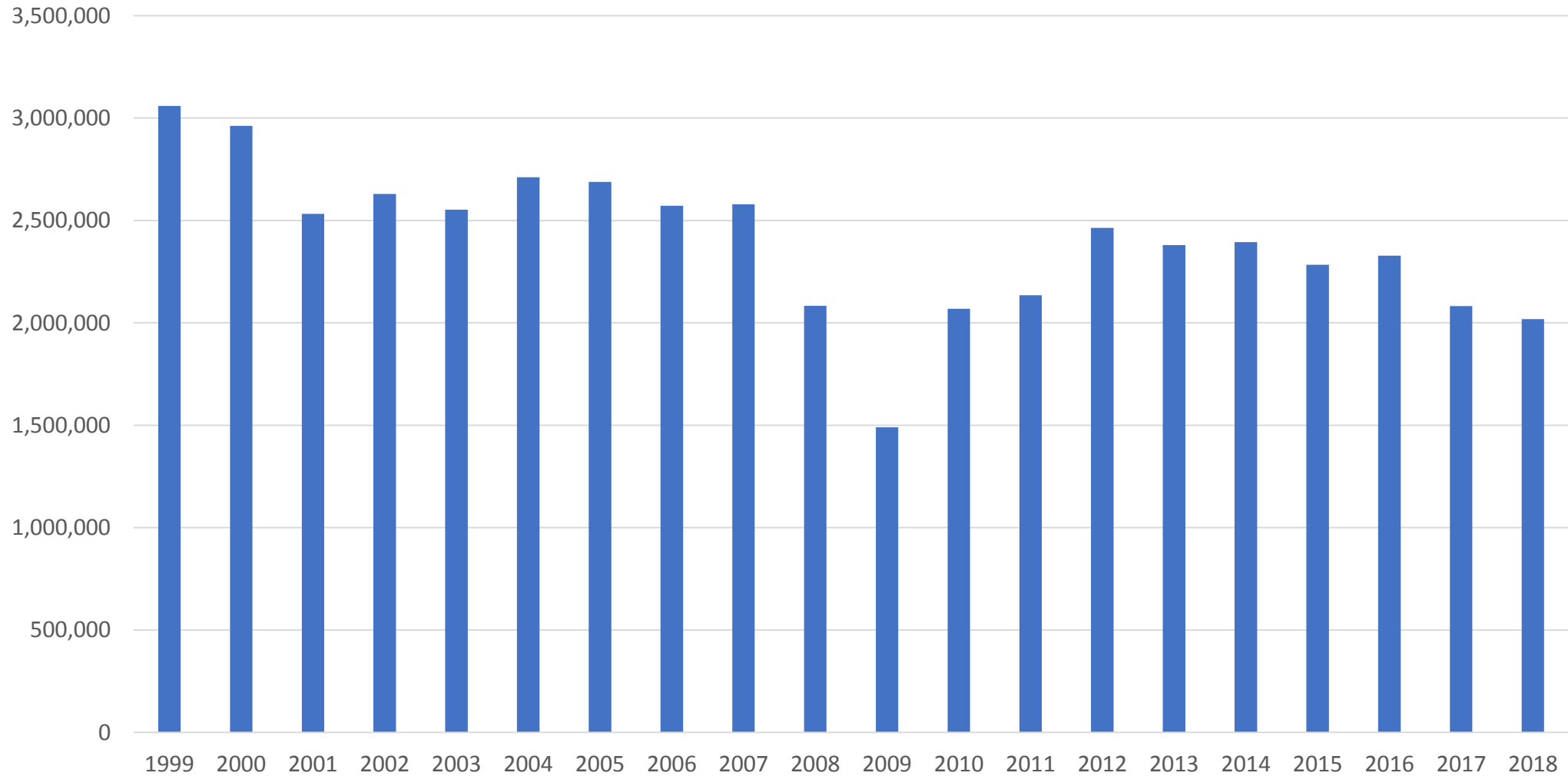
Employment Shares of Underrepresented Groups, Canada



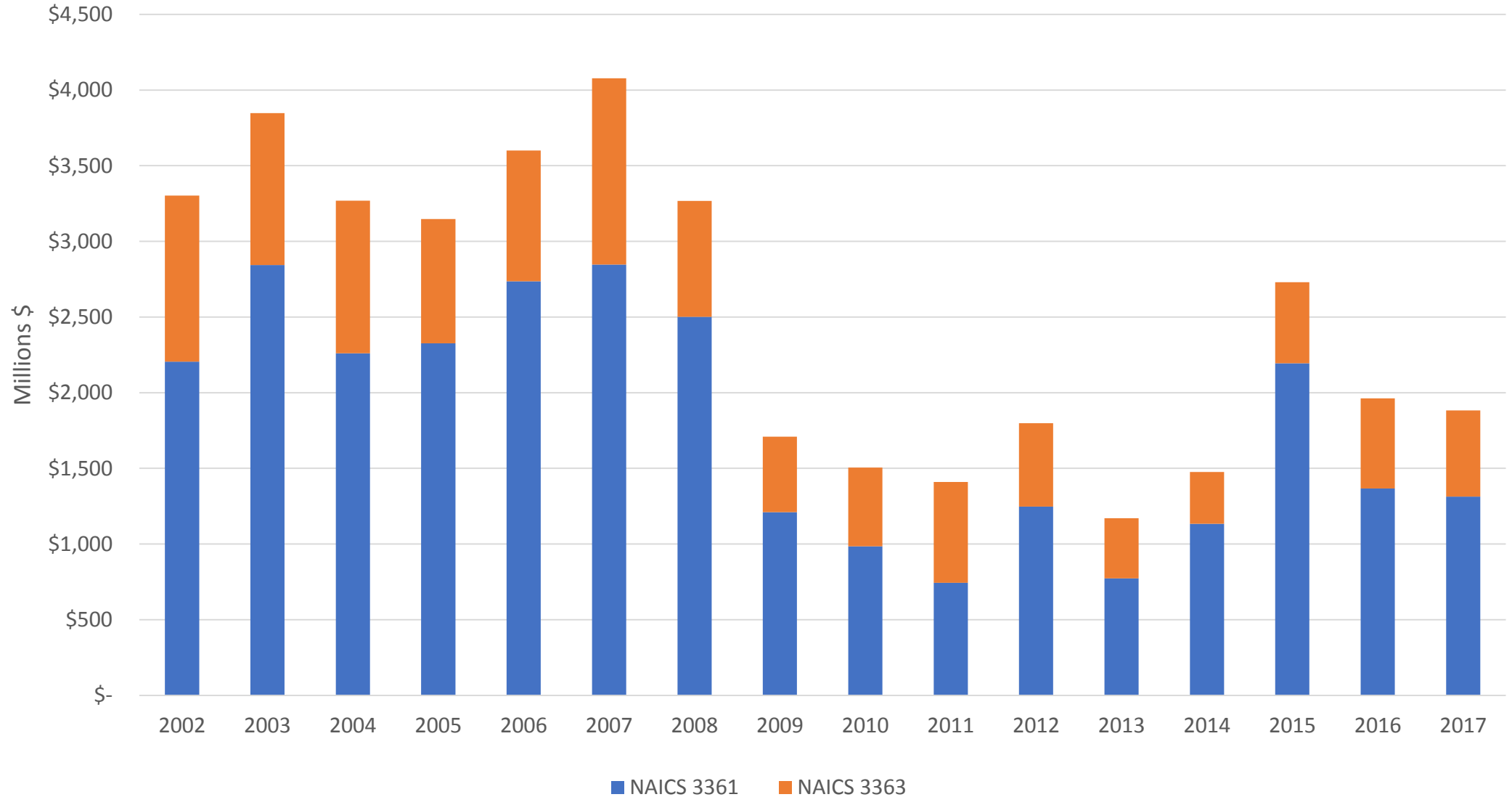
Canada's Automotive Trade Balance, 2000-2018



Vehicle Production (Units)



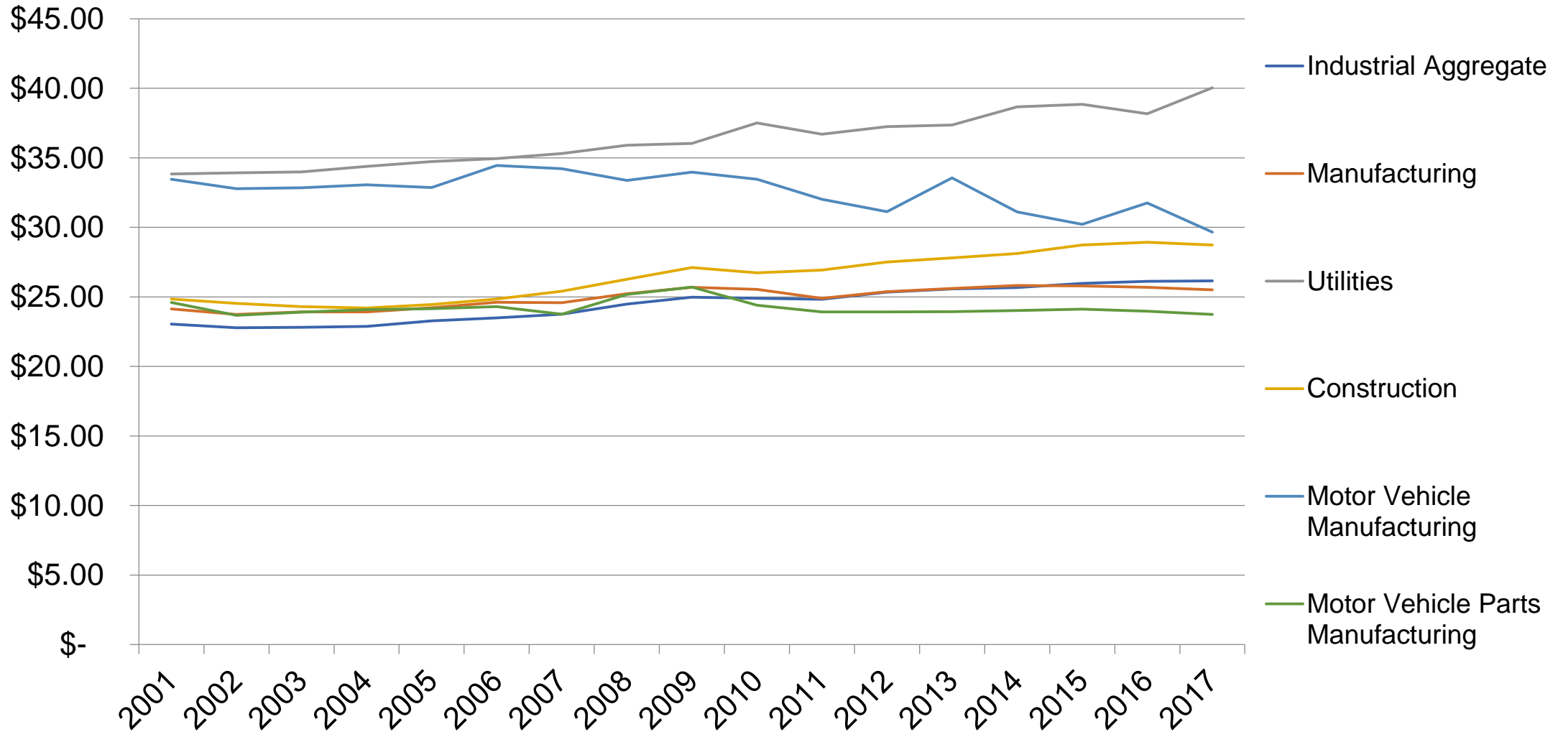
Capital Expenditures



Jobs Per Sub Sector

Category	Establishments	Employment
Vehicle Assembly	19	>38,000
OEM Parts	9	>5,000
Independent Automotive Parts	>450	>95,000
'Diversified' Suppliers	>350	>25,000
Tooling and Automation	>250	>20,000
Software and Technology	>100	>5,000
Tire Manufacturing	7	>5,300
Raw Materials	>20	>15,000

Hourly Wages in Select Industries, 2001-2017



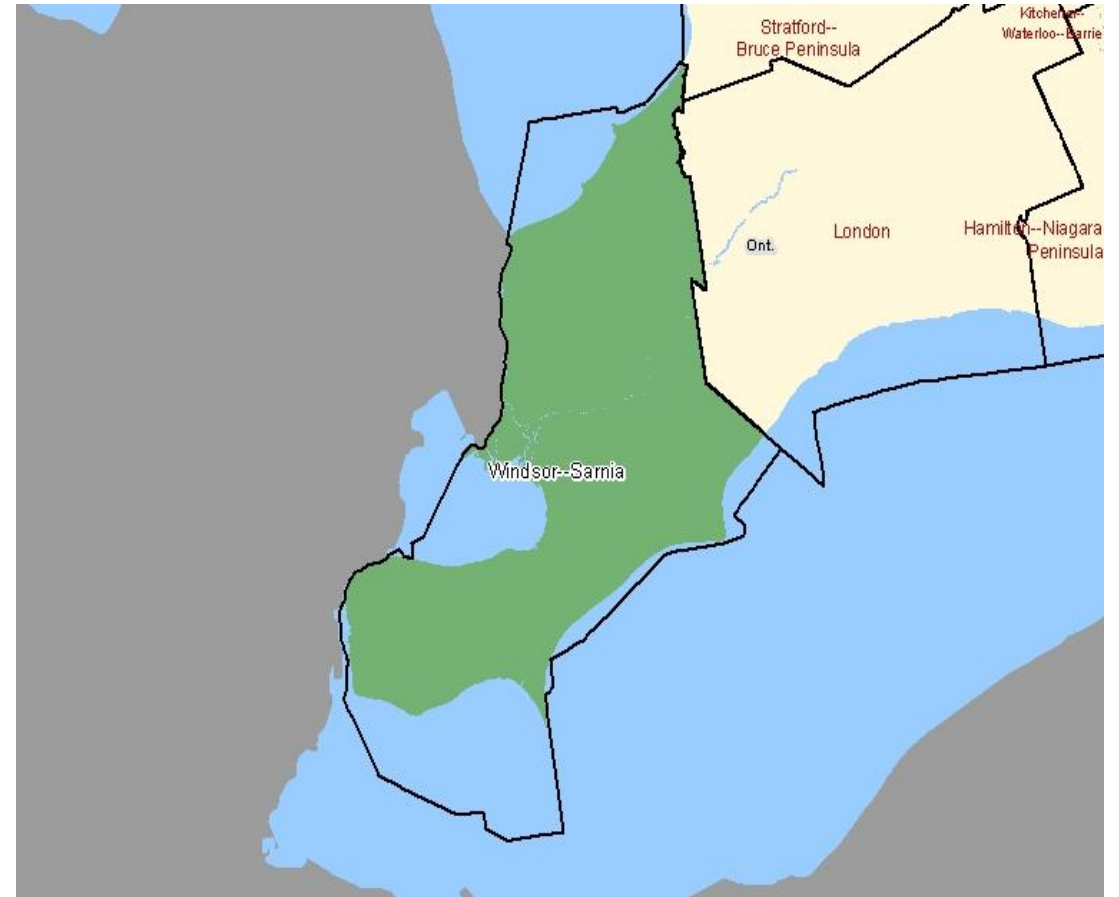
2017 Hourly Wages

Industry	2017 Hourly Wages
Utilities	\$40.03
Motor Vehicle Manufacturing	\$29.65
Construction	\$28.73
Industrial Aggregate	\$26.16
Manufacturing	\$25.35
Motor Vehicle Parts Manufacturing	\$23.74

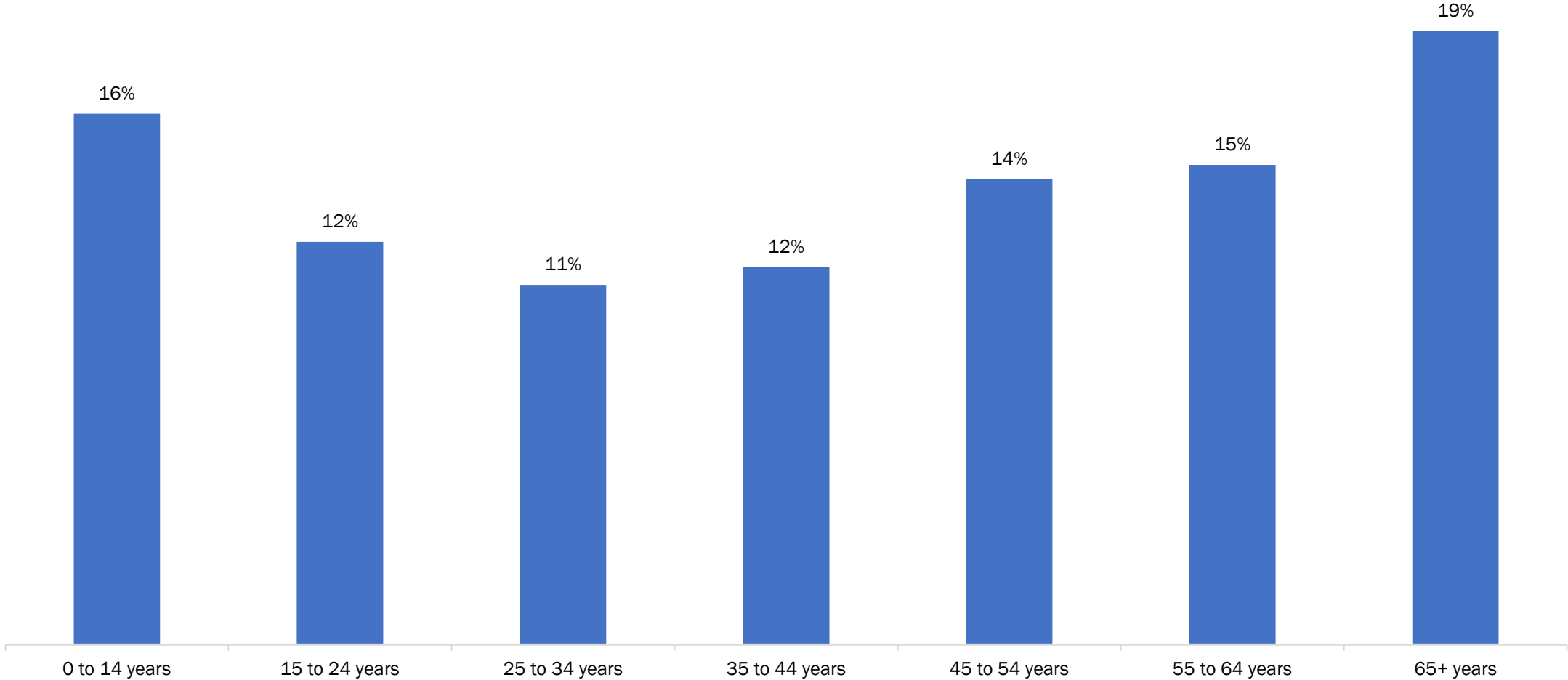
Windsor-Sarnia Economic Region

- Total Population: 627,633
- Working Age Population: 405,451
- Labour Force*: 306,515
- Unemployment Rate: 7.5%

*the labour force includes all individuals who are employers or are unemployed and actively seeking work

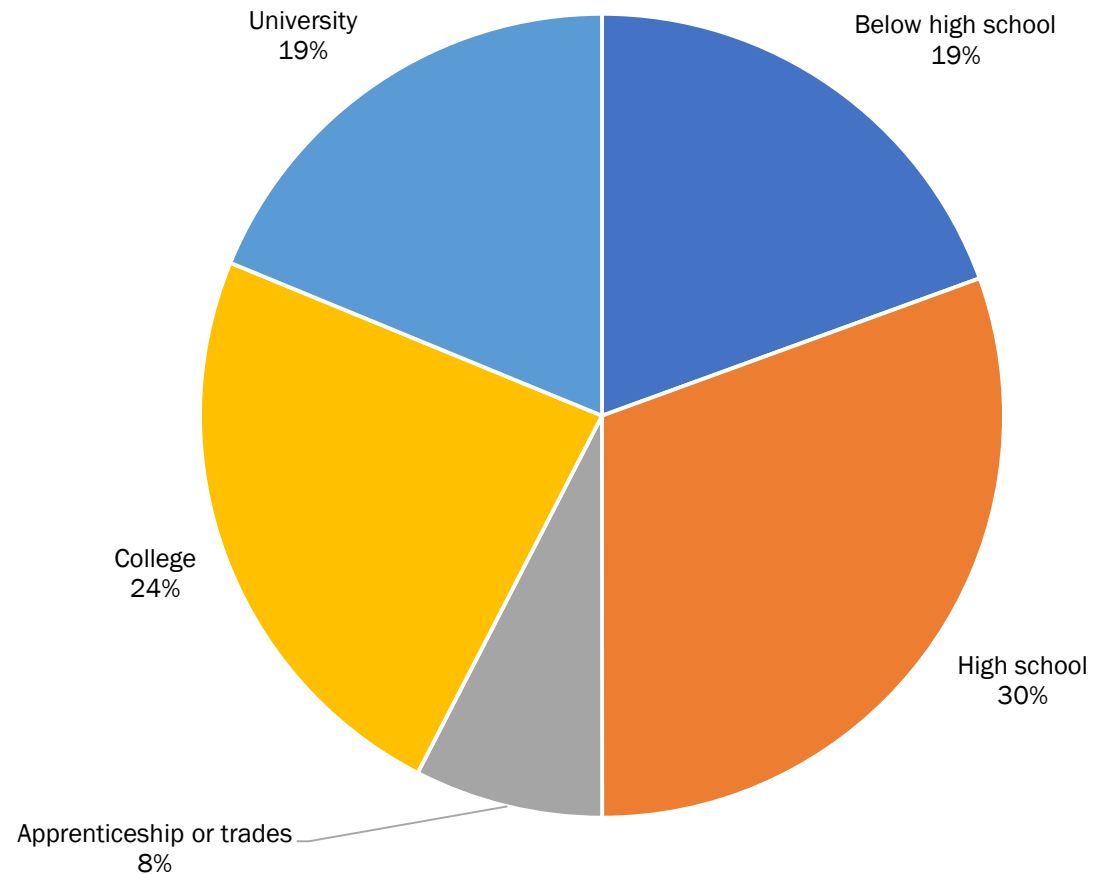


Total Population by Age Group, Windsor-Sarnia

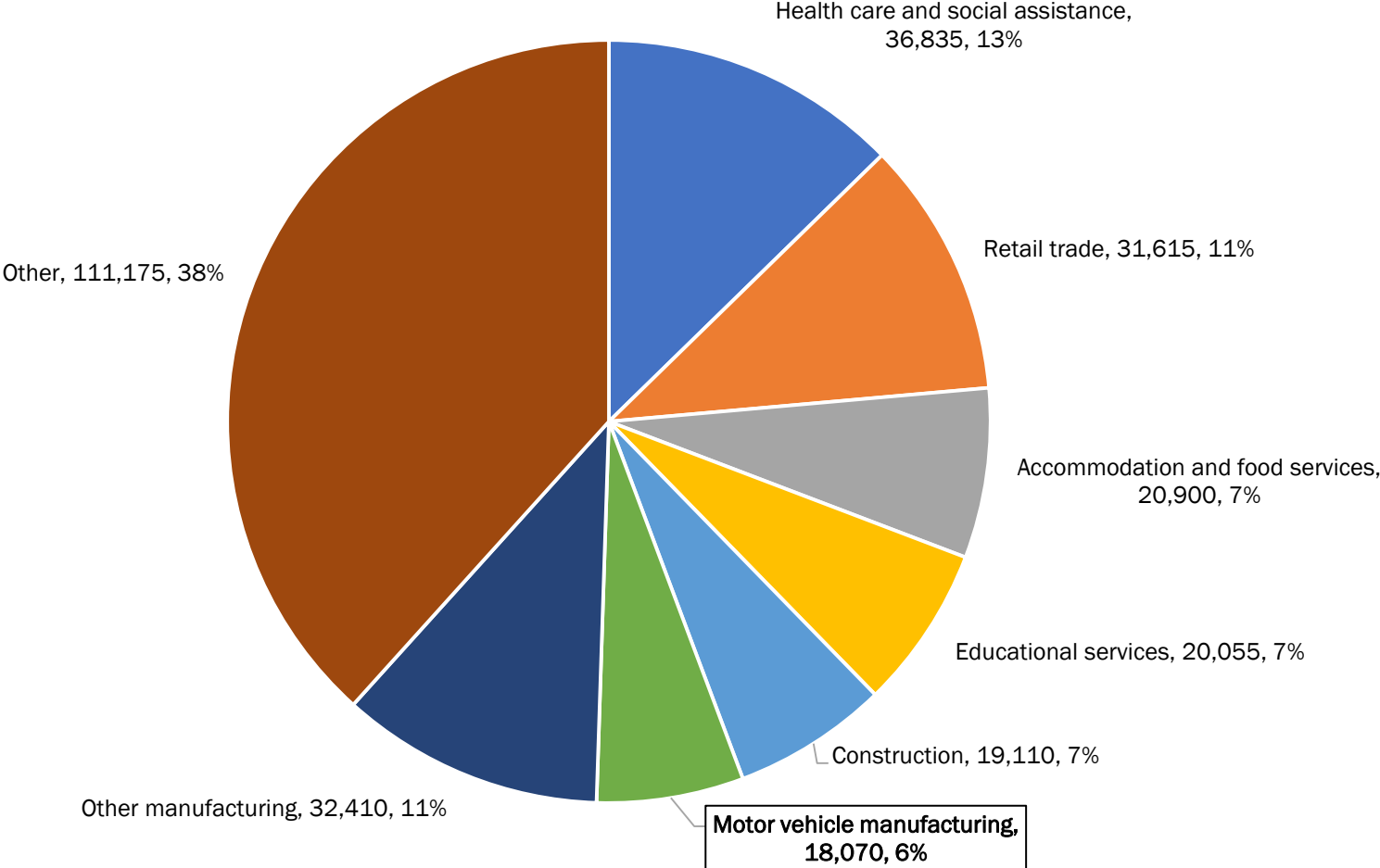


Source: Statistics Canada, 2016 Census

Working Age Population by Education, Windsor-Sarnia



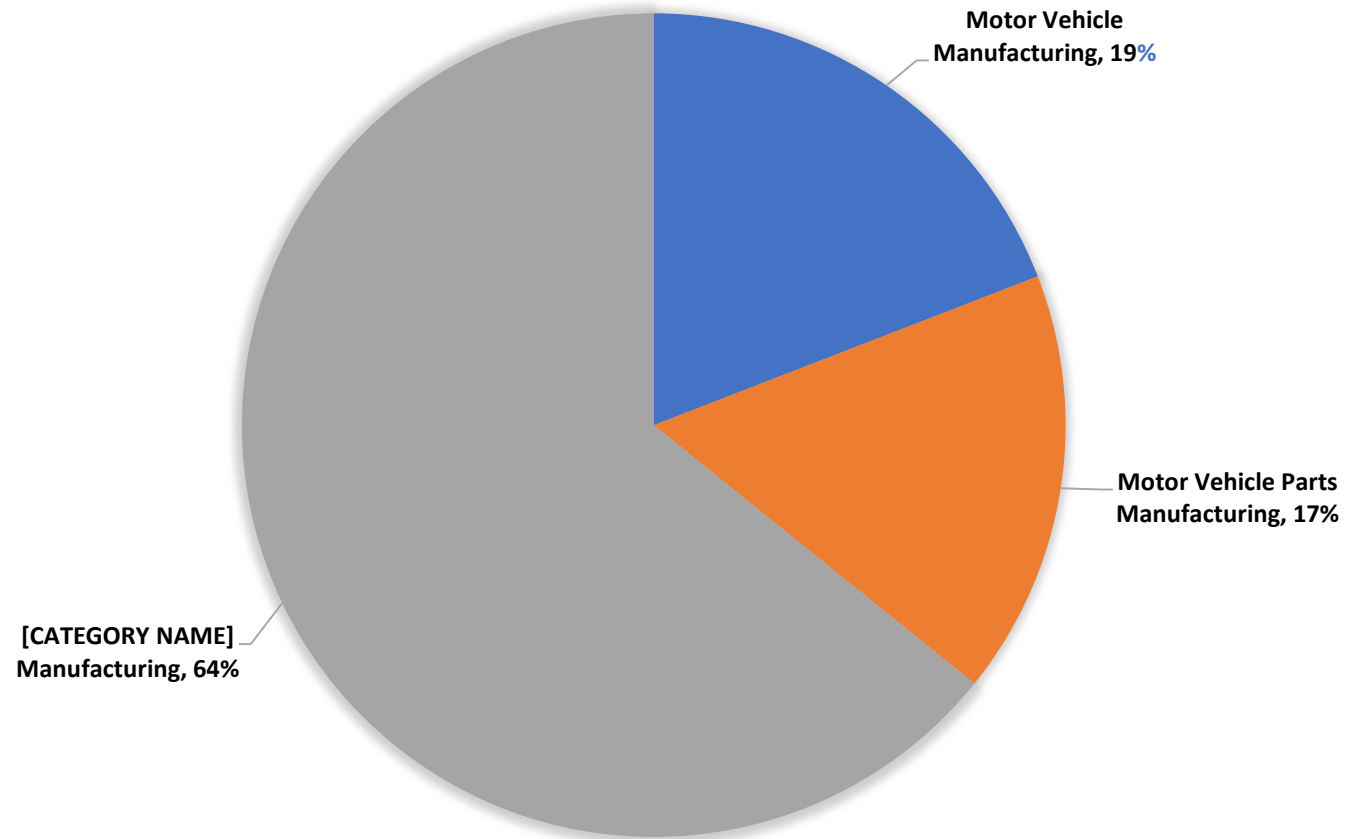
Total Labour Force by Industry, Windsor-Sarnia



Source: Statistics Canada, 2016 Census

Total Manufacturing, Windsor-Sarnia

- **Total Manufacturing:**
50,480; 16% of labour force
- **Motor Vehicle Manufacturing (3361):**
9,650
- **Motor Vehicle Parts Manufacturing (3363):**
8,420
- **Other Manufacturing:**
32,410



Key Automotive Manufacturing Occupations, Windsor-Sarnia

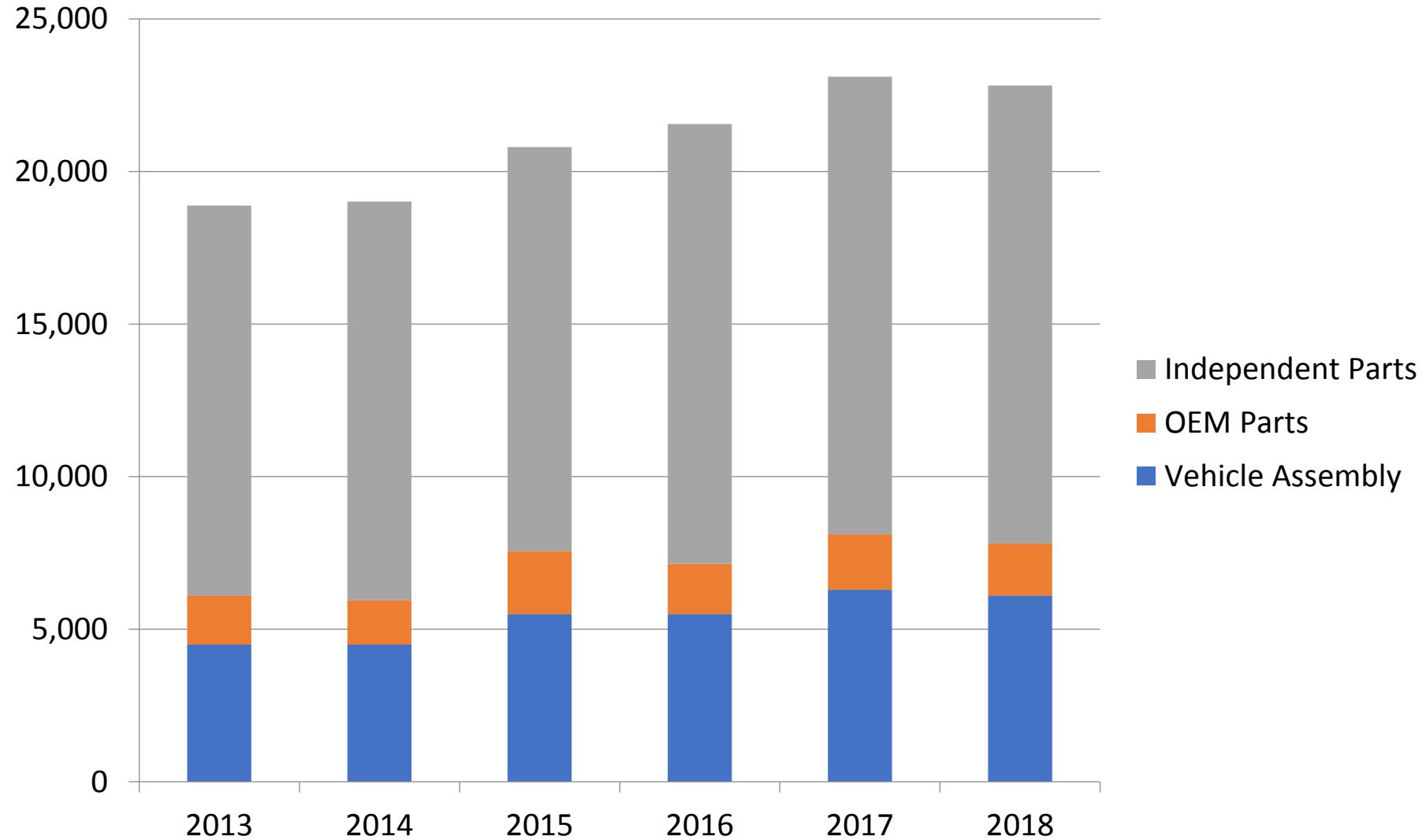
1. **Motor vehicle assemblers, inspectors and testers (NOC 9522)** – 8,225 workers; 46% of automotive manufacturing labour force
2. **Material handlers (NOC 7452)** – 960 workers; 5% of labour force
3. **Key trades*** - 920 workers; 5% of labour force
4. **Supervisors, motor vehicle assembling (NOC 9221)** – 865 workers; 5% of labour force
5. **Mechanical engineers (NOC 2132)** – 775 workers; 4% of labour force
6. **Manufacturing managers (NOC 0911)** – 475 workers; 3% of labour force

*includes industrial electricians (NOC 7242); construction millwrights and industrial mechanics (NOC 7311); tool and die makers (NOC 7232)

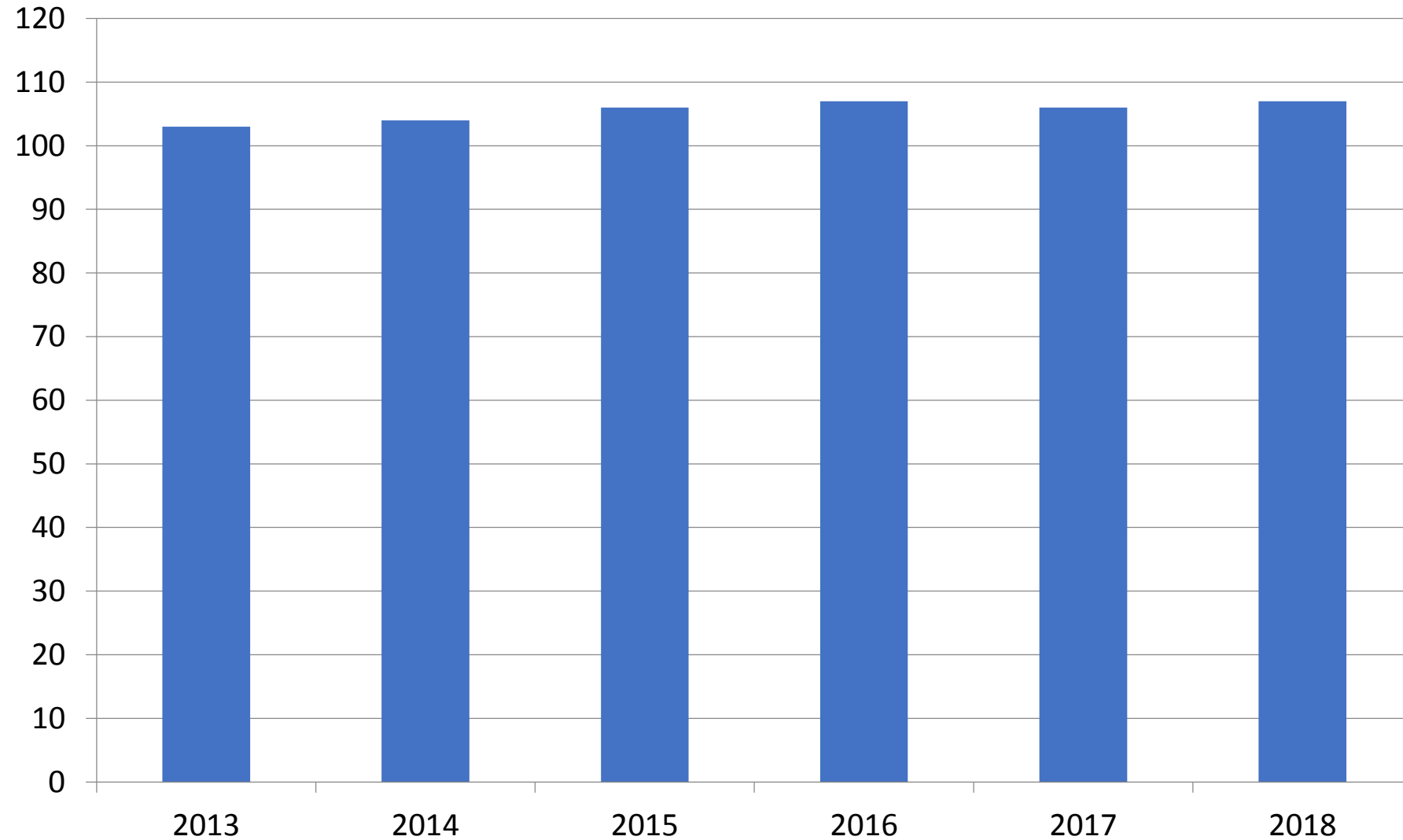
Overview - Windsor-Sarnia

- Nearly 23,000 direct automotive jobs
- Substantial growth in past 5 years as a result of investments by FCA, Ford, and parts manufacturers
- Top employers include FCA, Ford, Flex-n-Gate (Ventra, Veltri), Magna, and AP Plasman
- Windsor-Sarnia is also home to 200+ tool, die, mould, and automation establishments that employ over 15,000 people

Motor Vehicle Employment, Windsor-Sarnia



Establishments, Windsor-Sarnia



Top Automotive Employers, Windsor-Sarnia

	Establishments	Employment
FCA	1	6,100
Ford	2	1,700
Flex-n-Gate	6	1,520
Magna	2	1,400
AP Plasman	5	1,050
Waterville TG	1	804
TRQSS	1	800
Valiant	8	900
CenterLine	2	709
NARMCO	5	650
KSR International	1	607