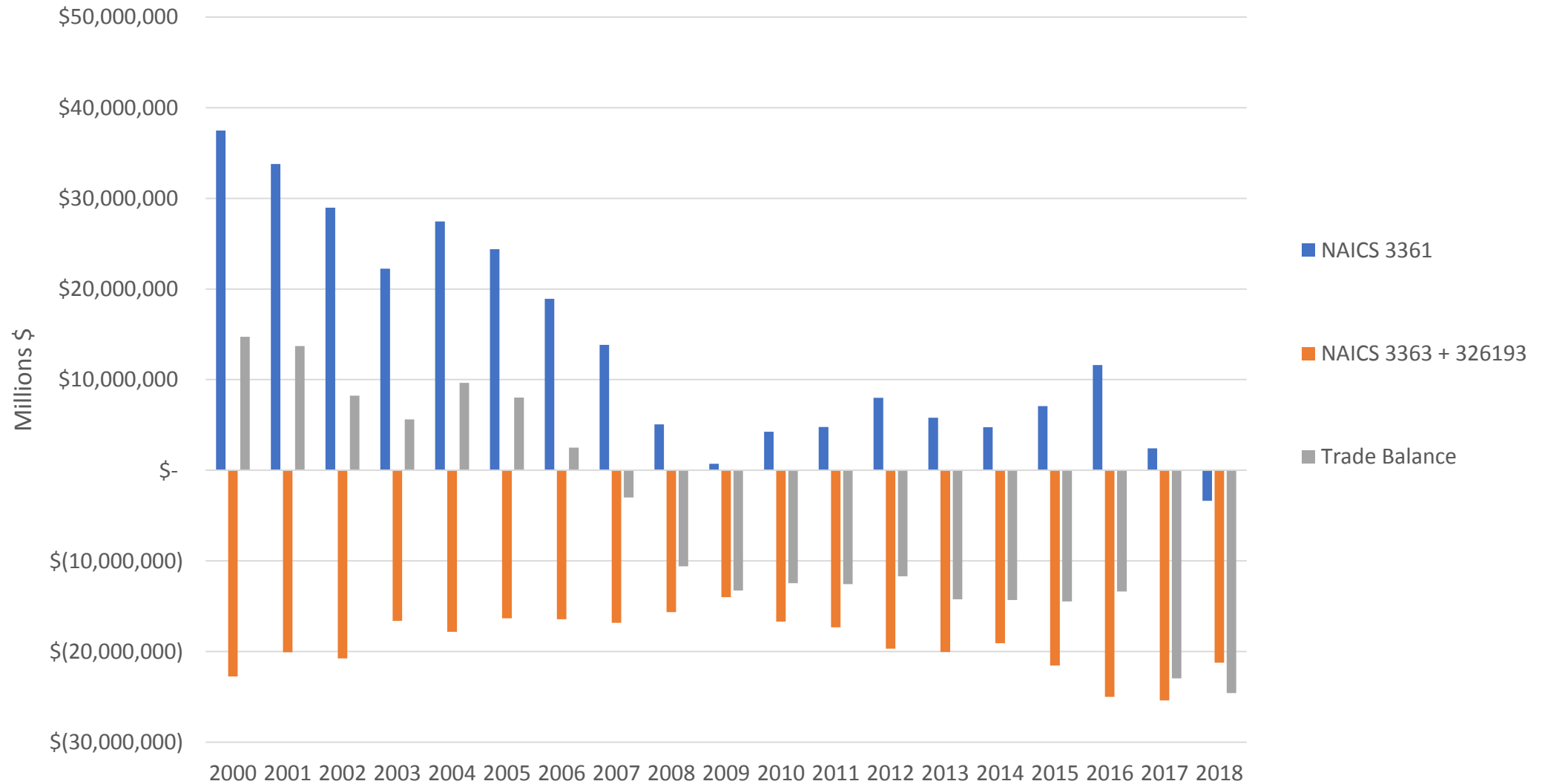


Regional Automotive Labour Market – KW-Barrie

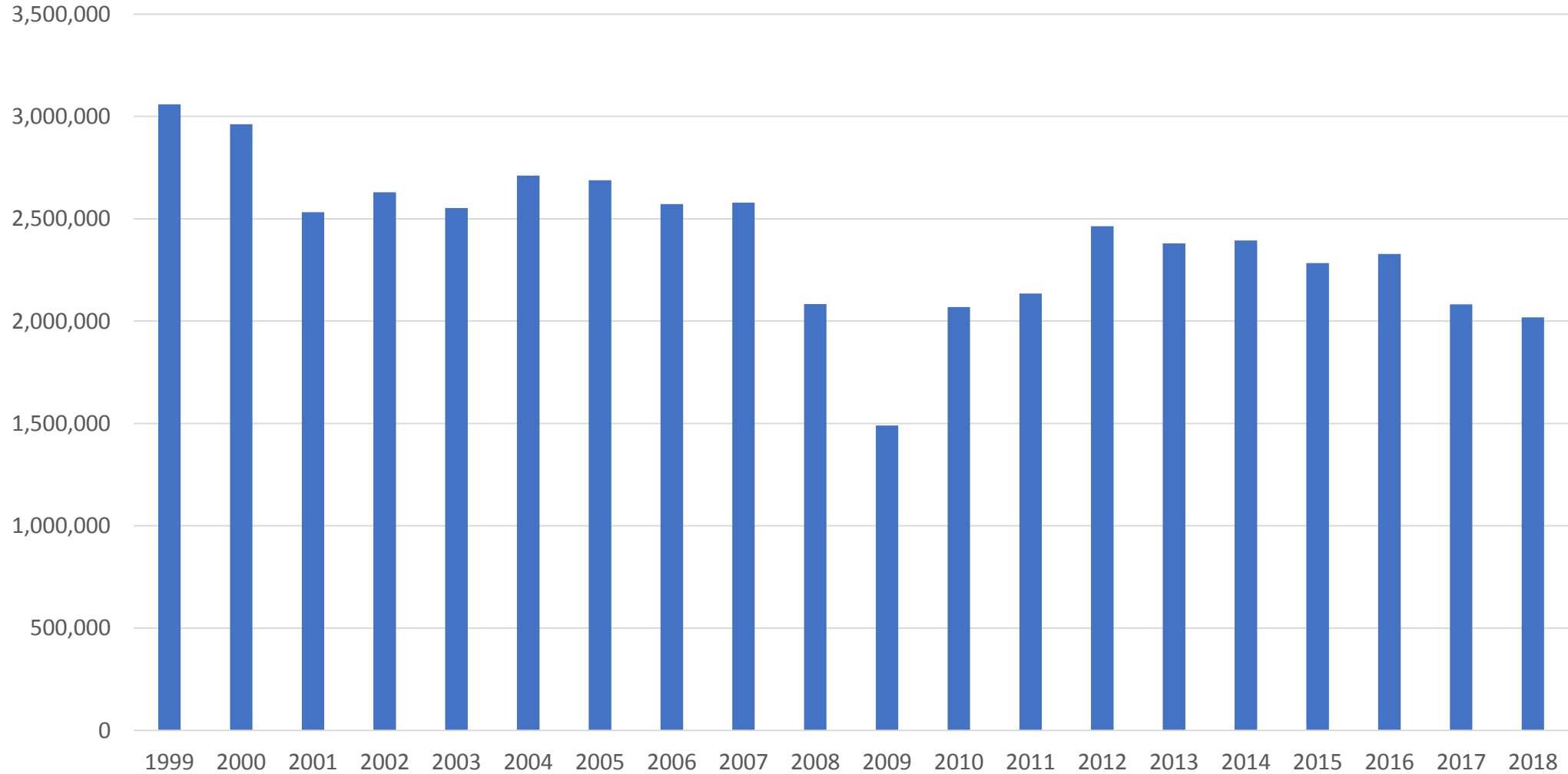
Summary Profile

April 2019

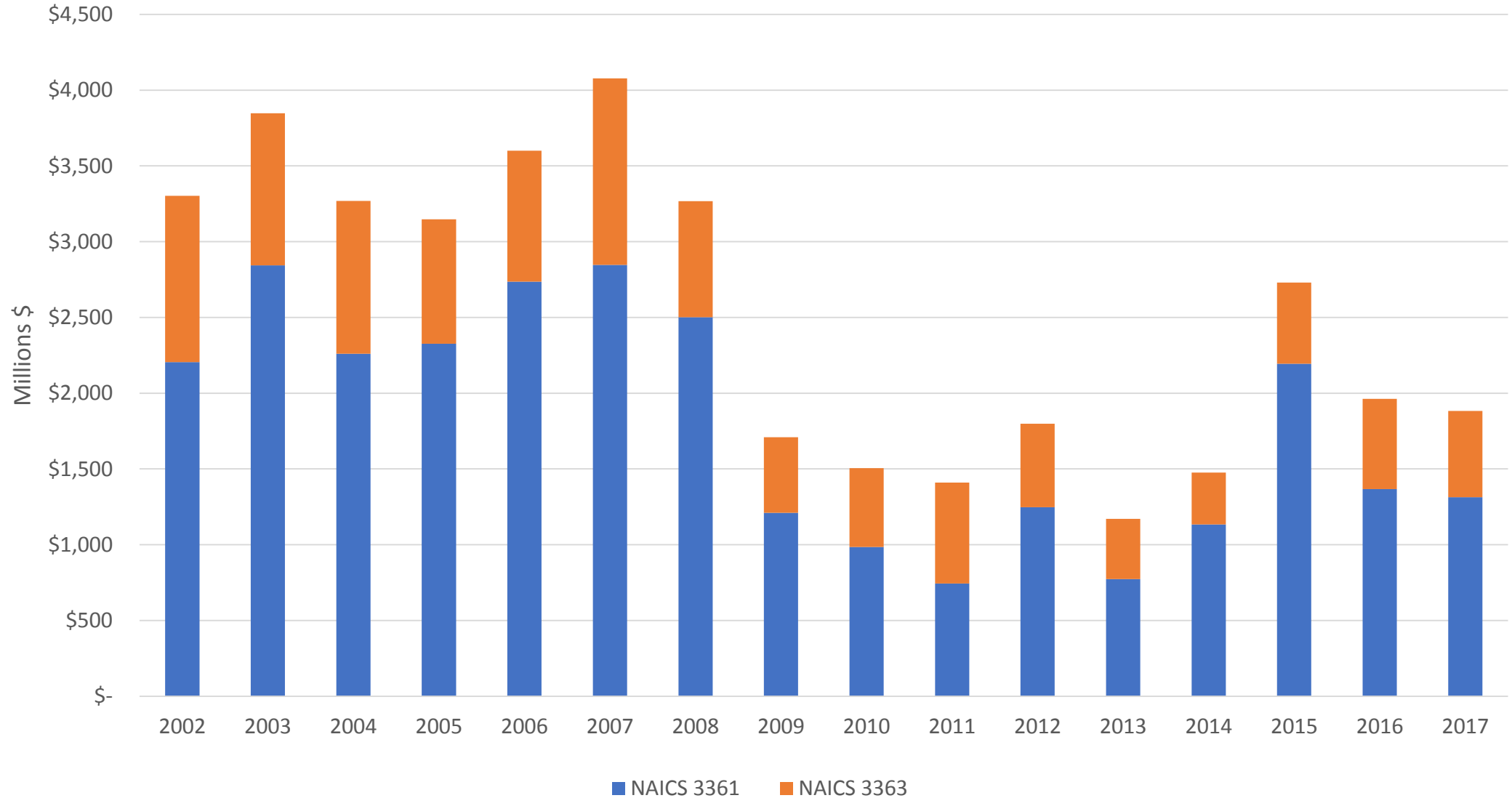
Canada's Automotive Trade Balance, 2000-2018



Vehicle Production (Units)



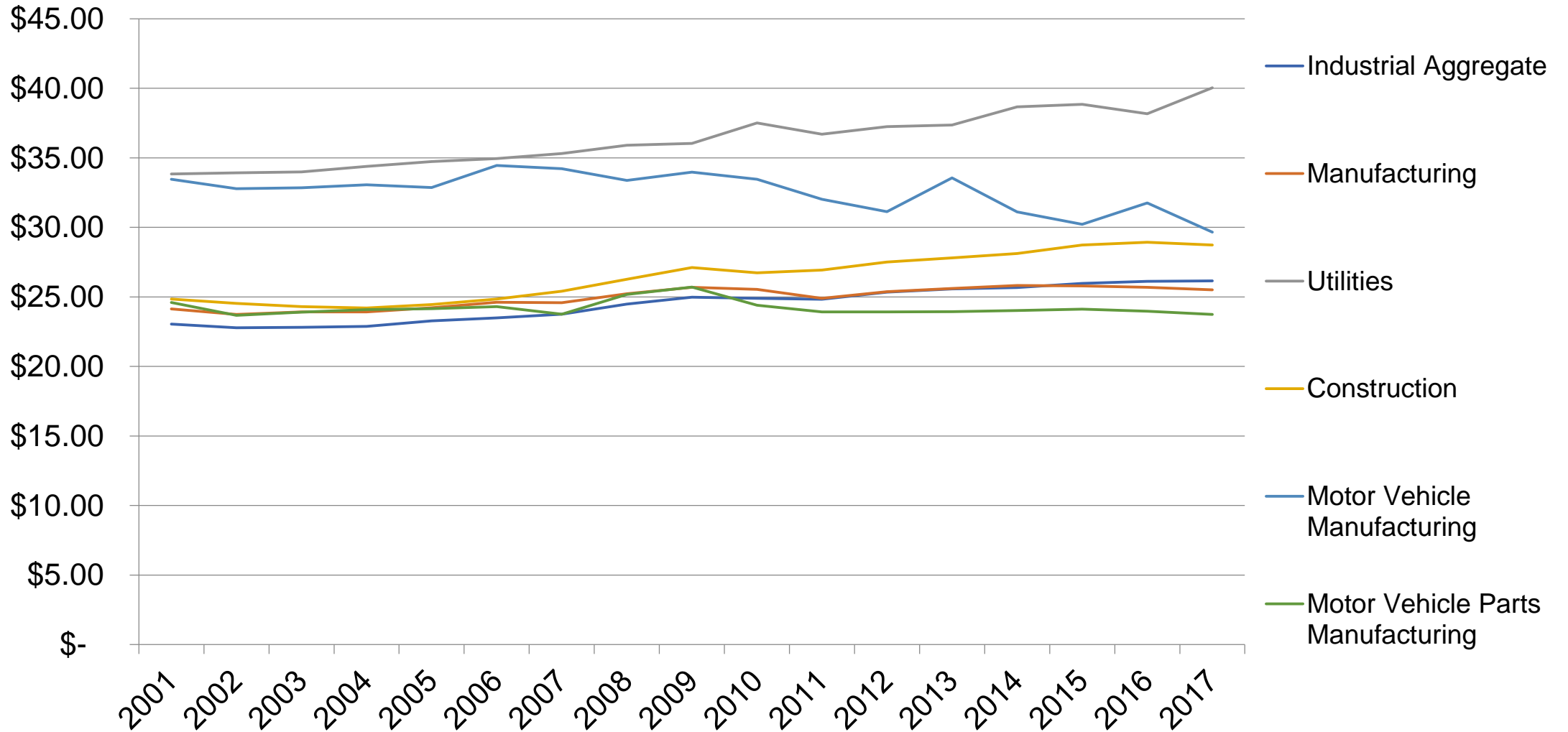
Capital Expenditures



Jobs Per Sub Sector

Category	Establishments	Employment
Vehicle Assembly	19	>38,000
OEM Parts	9	>5,000
Independent Automotive Parts	>450	>95,000
'Diversified' Suppliers	>350	>25,000
Tooling and Automation	>250	>20,000
Software and Technology	>100	>5,000
Tire Manufacturing	7	>5,300
Raw Materials	>20	>15,000

Hourly Wages in Select Industries, 2001-2017



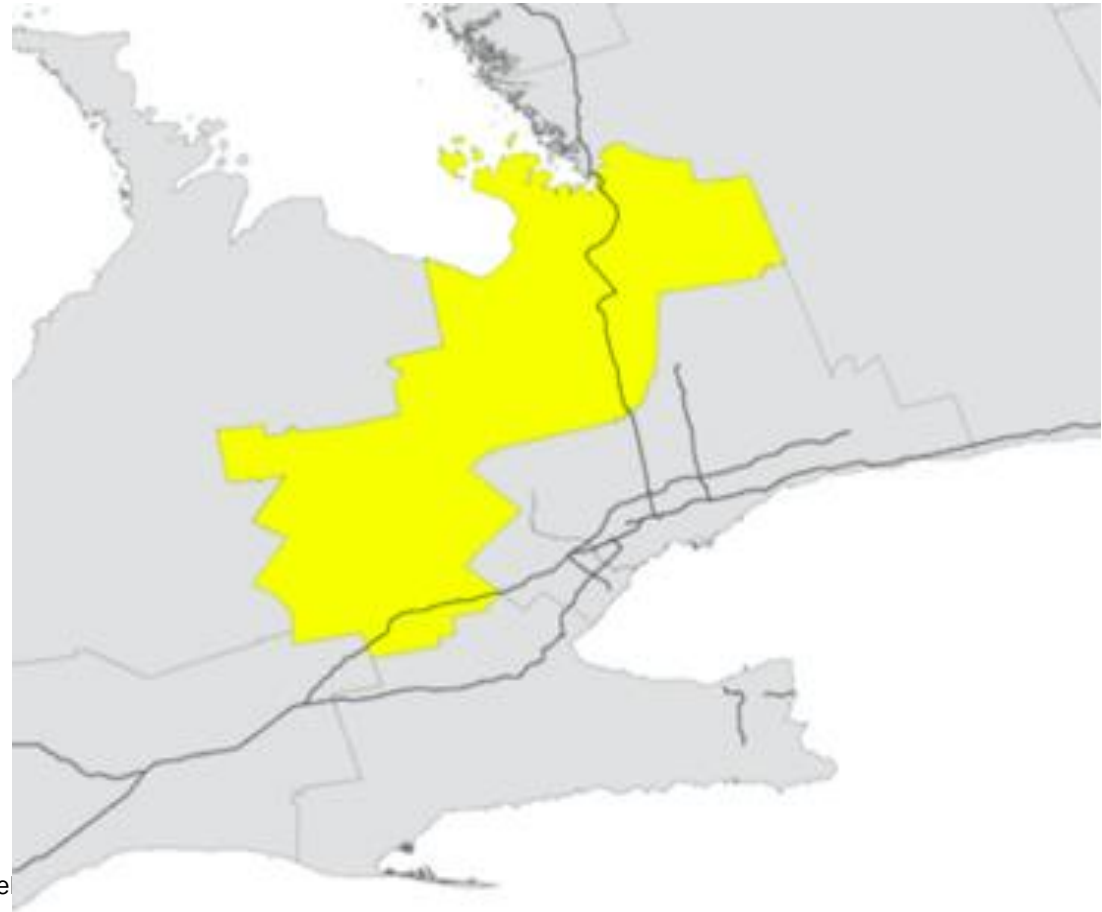
2017 Hourly Wages

Industry	2017 Hourly Wages
Utilities	\$40.03
Motor Vehicle Manufacturing	\$29.65
Construction	\$28.73
Industrial Aggregate	\$26.16
Manufacturing	\$25.35
Motor Vehicle Parts Manufacturing	\$23.74

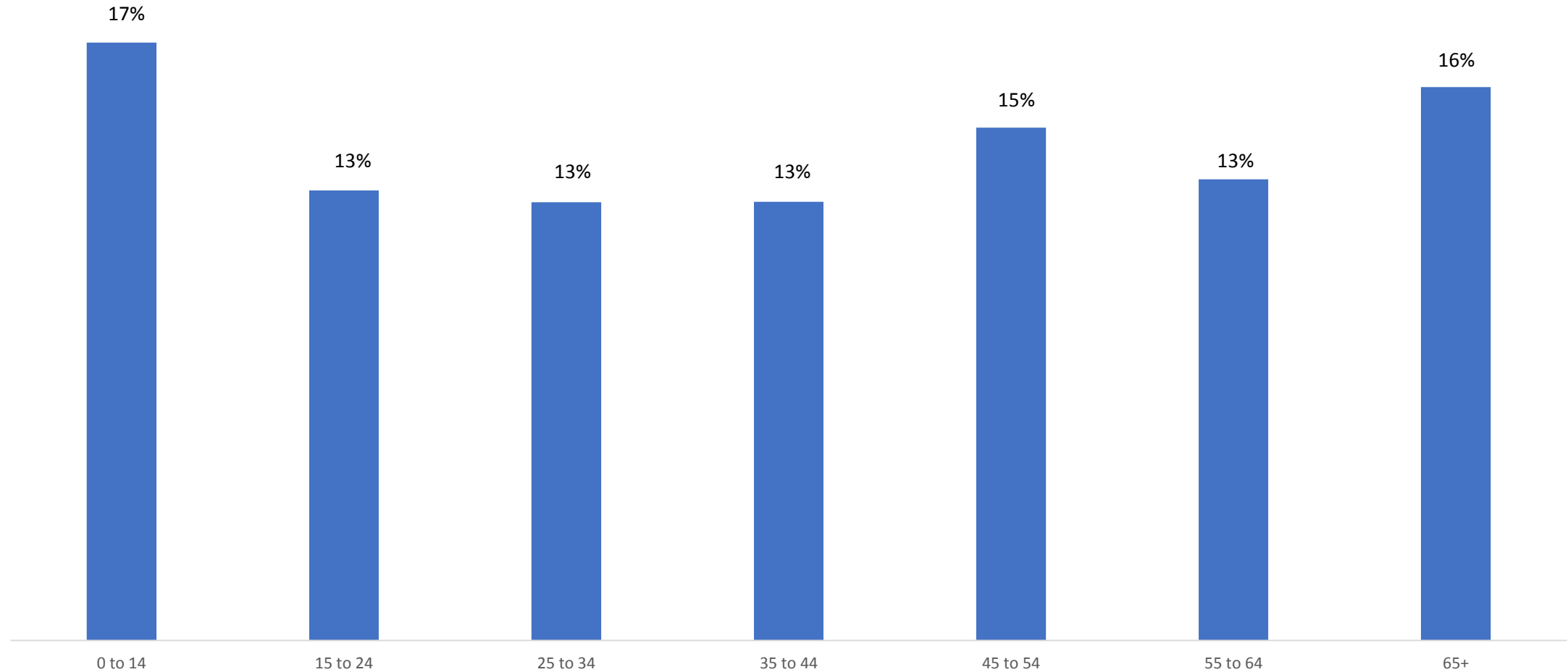
Kitchener-Waterloo-Barrie Region

- **Total Population: 1,299,265**
- **Working Age Population: 865,965**
- **Labour Force*: 715,000**
- **Unemployment Rate: 6%**

*the labour force includes all individuals who are employers or are unemployed and active seeking work

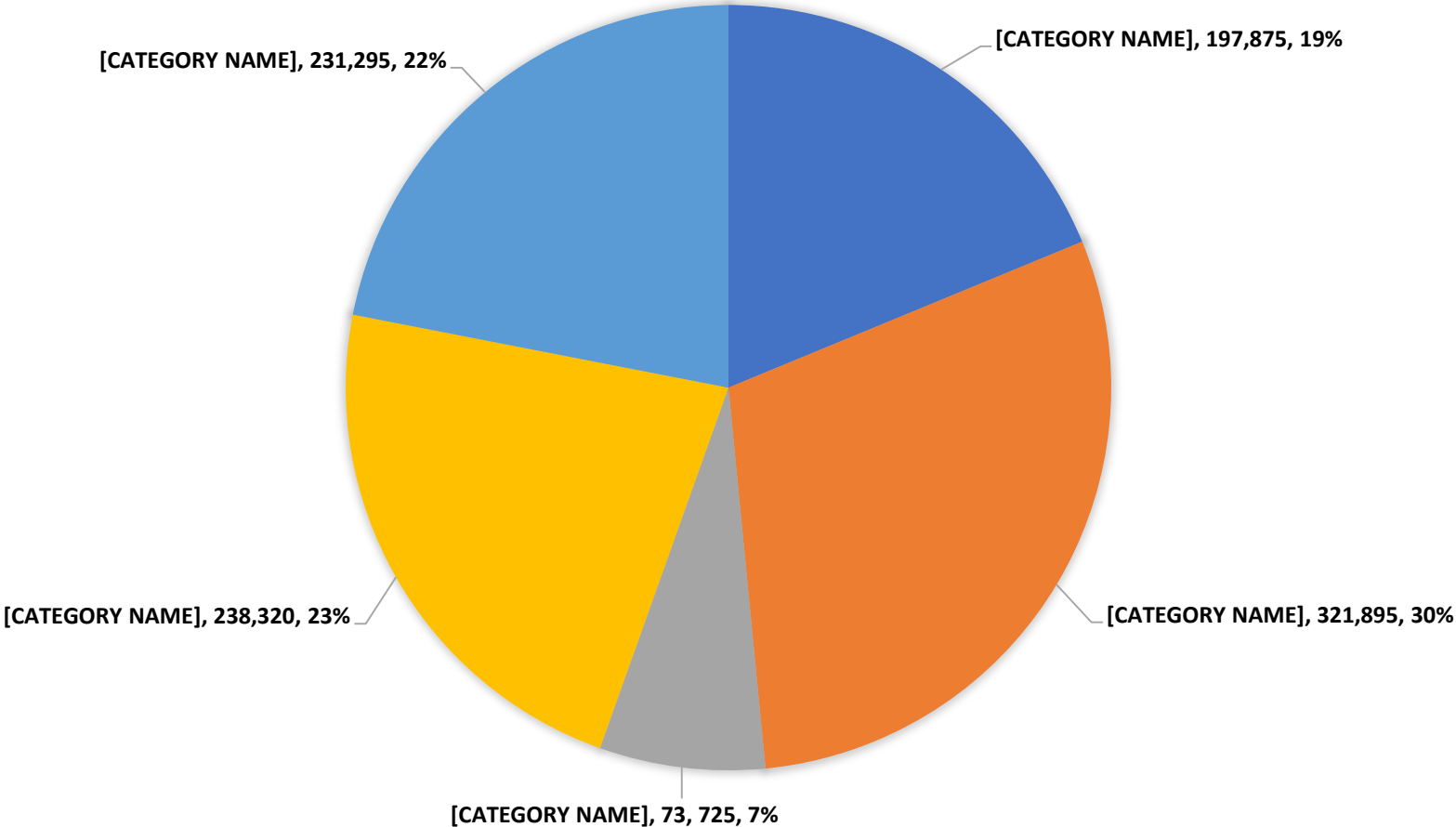


Total Population by Age Group, Kitchener-Waterloo-Barrie

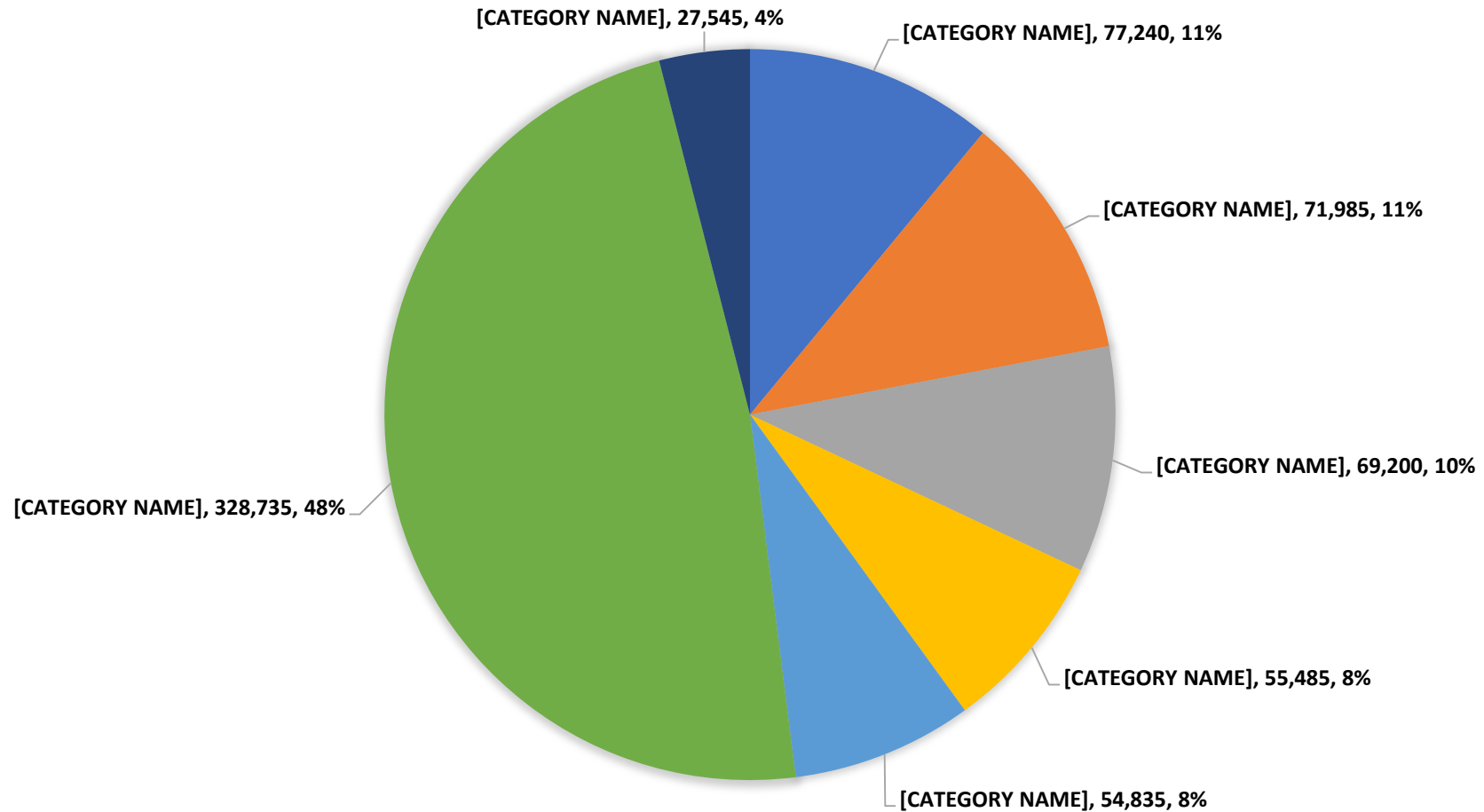


Source: Statistics Canada, 2016 Census

Working Age Population by Education, Kitchener-Waterloo-Barrie

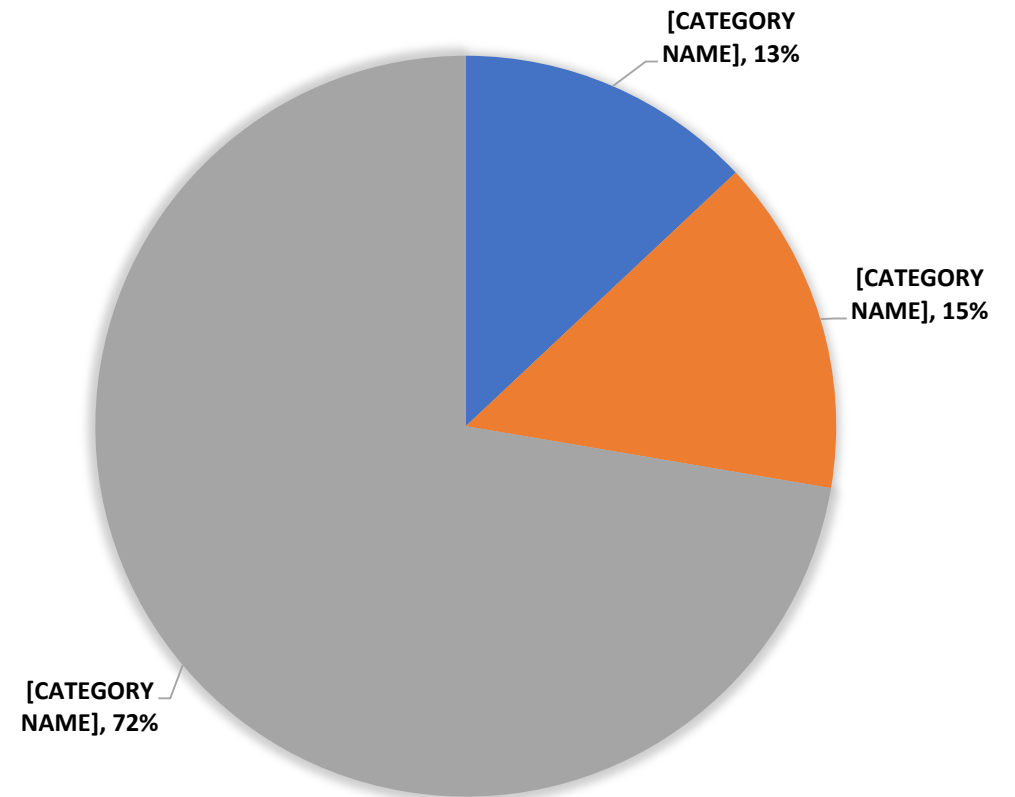


Total Labour Force by Industry, Kitchener-Waterloo-Barrie



Total Manufacturing, Kitchener-Waterloo- Barrie Region

- **Total Manufacturing:**
99,540; 15% of labour force
- **Motor Vehicle Manufacturing (3361):** 12,935
- **Motor Vehicle Parts Manufacturing (3363):** 14,610
- **Other Manufacturing:** 71,985



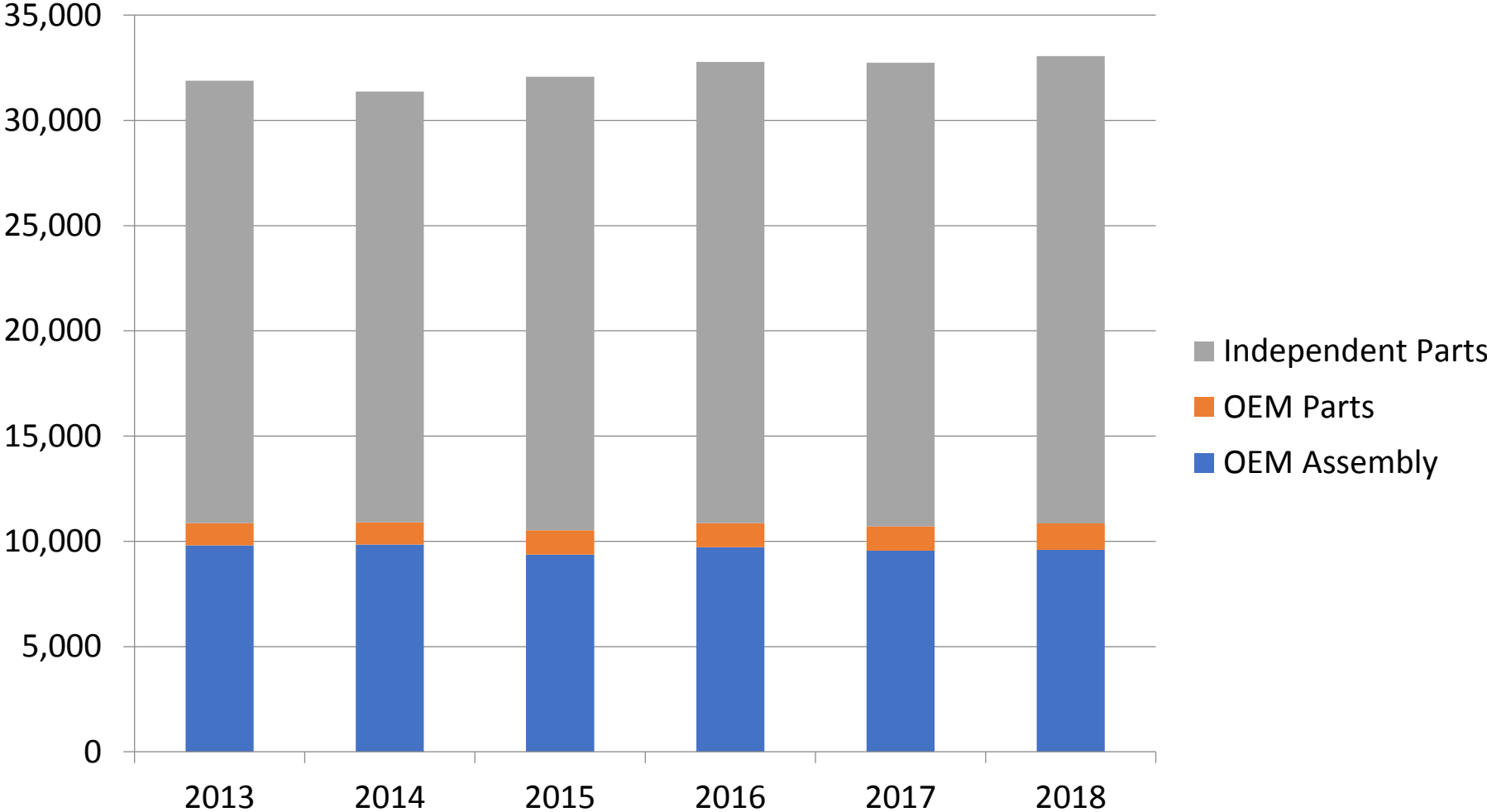
Key Automotive Manufacturing Occupations, Kitchener-Waterloo-Barrie

1. **Motor vehicle assemblers, inspectors and testers (NOC 9522)** – 11,700 workers; 42% of automotive manufacturing labour force
2. **Material handlers (NOC 7452)** – 1,220 workers; 4% of labour force
3. **Key trades*** - 1,485 workers; 5% of labour force
4. **Supervisors, motor vehicle assembling (NOC 9221)** – 1,925 workers; 7% of labour force
5. **Mechanical engineers (NOC 2132)** – 500 workers; 2% of labour force
6. **Manufacturing managers (NOC 0911)** – 755 workers; 3% of labour force

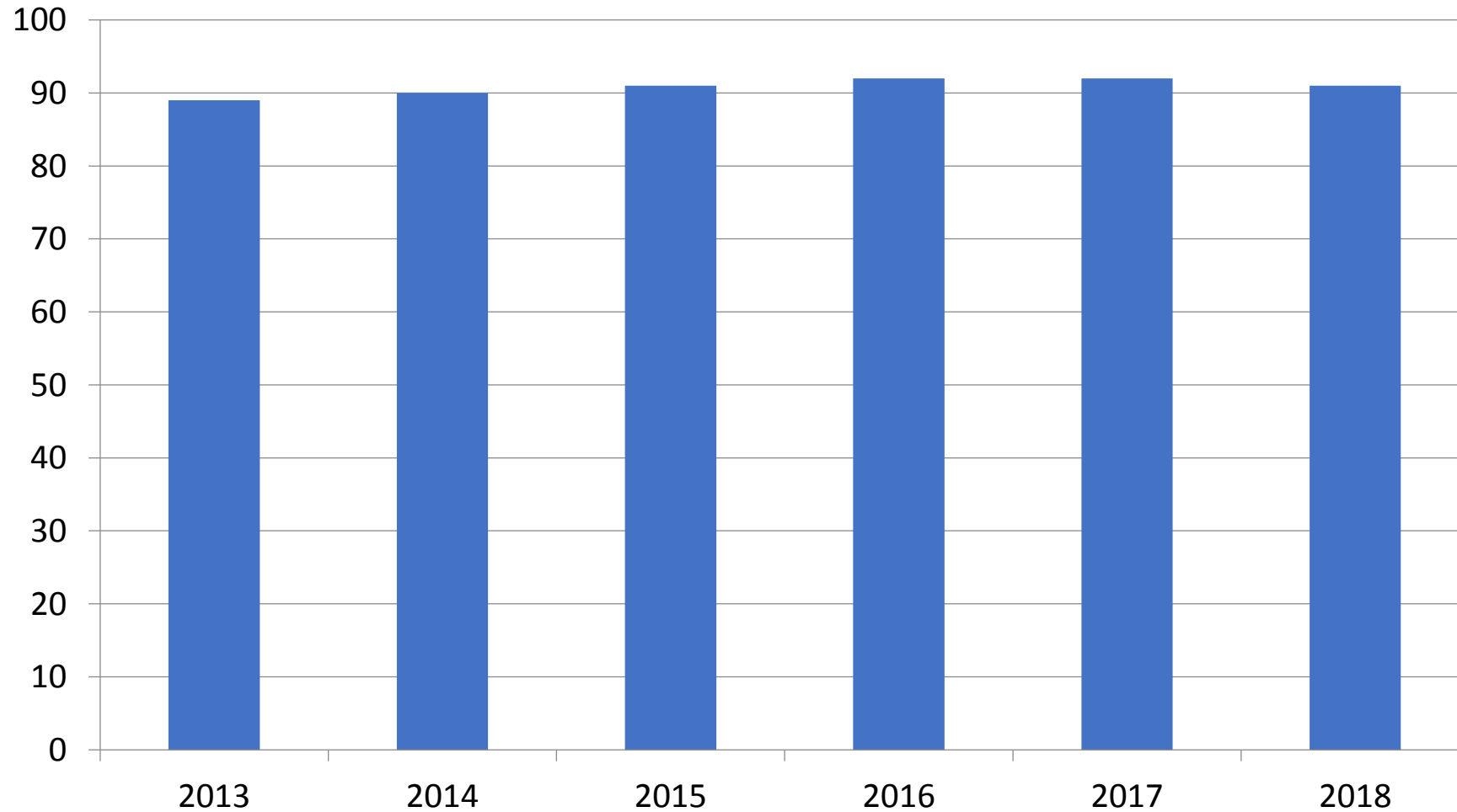
Overview, Kitchener-Waterloo-Barrie Region

- Canada's largest economic region in terms of vehicle production; over 33,000 direct jobs
- Growth and stability in the past five years due to investments by Toyota, Honda, and Linamar
- Top employers include Linamar, Toyota, Honda, Magna, and Mitchell Plastics
- The region is also home to an emerging automotive software cluster centered around Waterloo and several dozen automotive tooling and automation firms that employ over 3,000 people

Motor Vehicle Employment, Kitchener-Waterloo-Barrie Region



Establishments, Kitchener-Waterloo-Barrie Region



Top Automotive Employers, Kitchener-Waterloo-Barrie Region

	Establishments	Employment
Linamar	21	6,723
Toyota	2	5,300
Honda	3	4,300
Magna	2	2,110
Mitchell Plastics	2	1,157
F&P Manufacturing	1	920
Simcoe Parts Service (HLI)	1	900
Toyoda Gosei	1	750
Denso	1	746
Bend-All Automotive	3	720